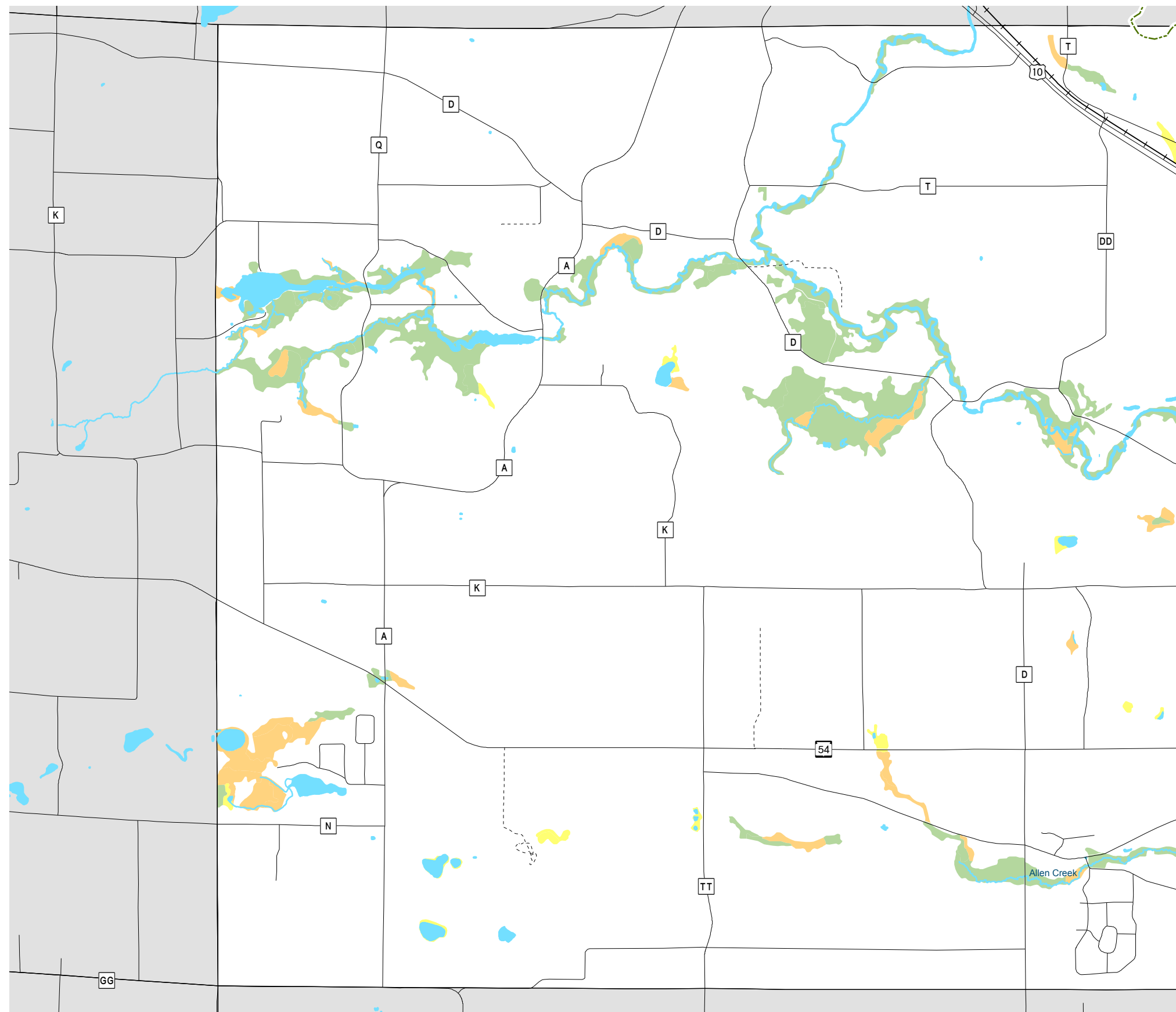
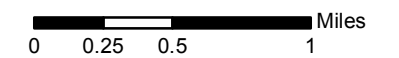


# Map 5.4 Wetlands & Watersheds



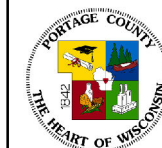
- Wetland Class**
- Emergent / Wet Meadow
  - Scrub / Shrub
  - Forested
- Watershed Boundaries



Source: Portage County Planning & Zoning (2016)  
Wisconsin Wetlands Inventory (1985)

Map Printed: April 6, 2016

## Town of Lanark Comprehensive Plan



Portage County  
Planning & Zoning  
1462 Strongs Ave.  
Stevens Point, WI 54481