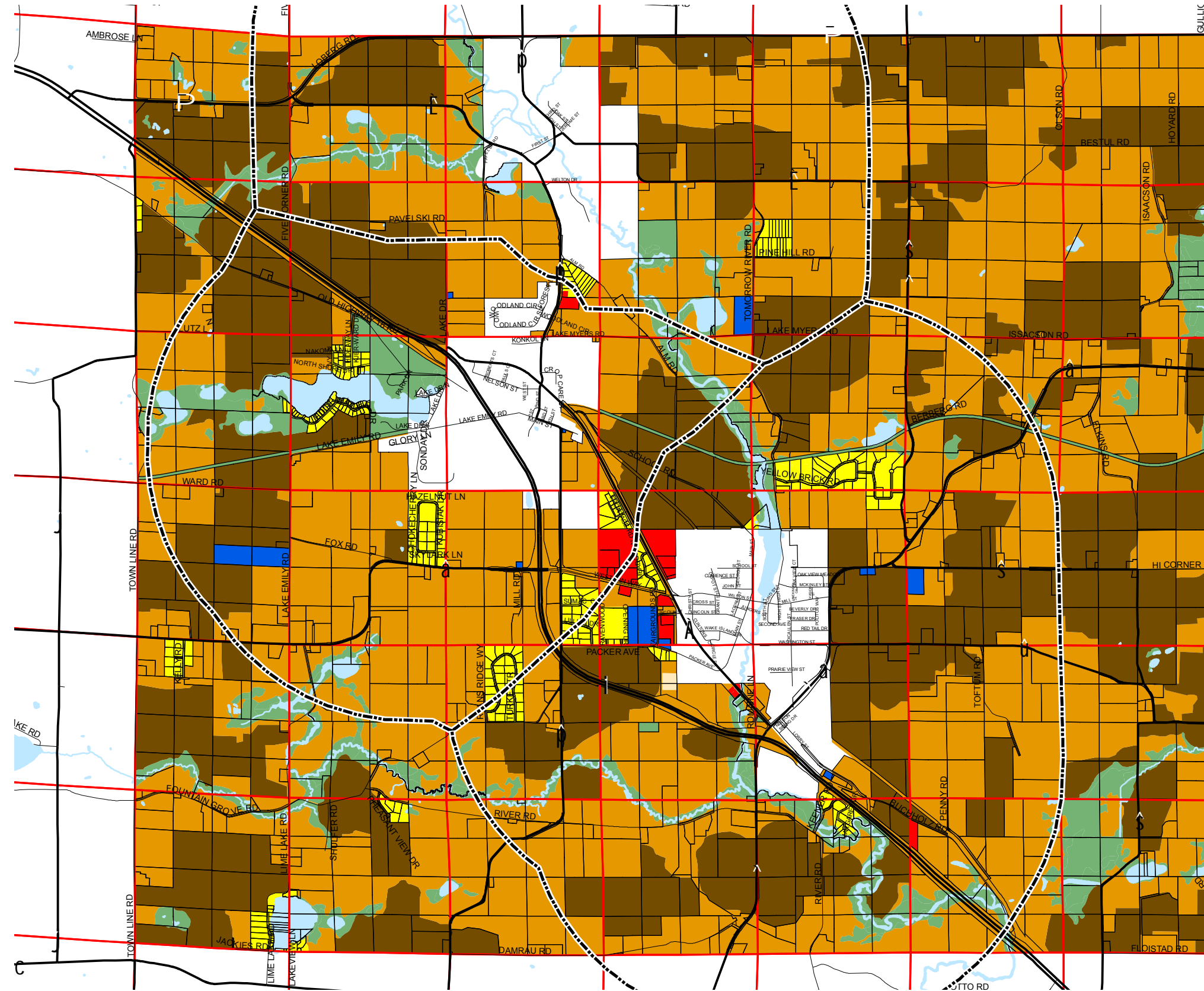


# Map 8.2 Future Land Use



## Future Land Use

- Extraterritorial Boundaries
- Residential
- Commercial
- Institutional
- L-2 General Agriculture
- L-3 Limited Agriculture / Mixed Use
- Natural Areas - Protected
- Non-Metallic Mining

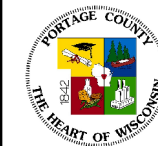


0 0.25 0.5 1 Miles

Source: Portage County Planning & Zoning (2004)  
DNR - Wisconsin Wetland Inventory (1986)

Adopted: June 9, 2005

## Town of Amherst Comprehensive Plan



Portage County  
Planning & Zoning  
1462 Strongs Ave.  
Stevens Point, WI 54481