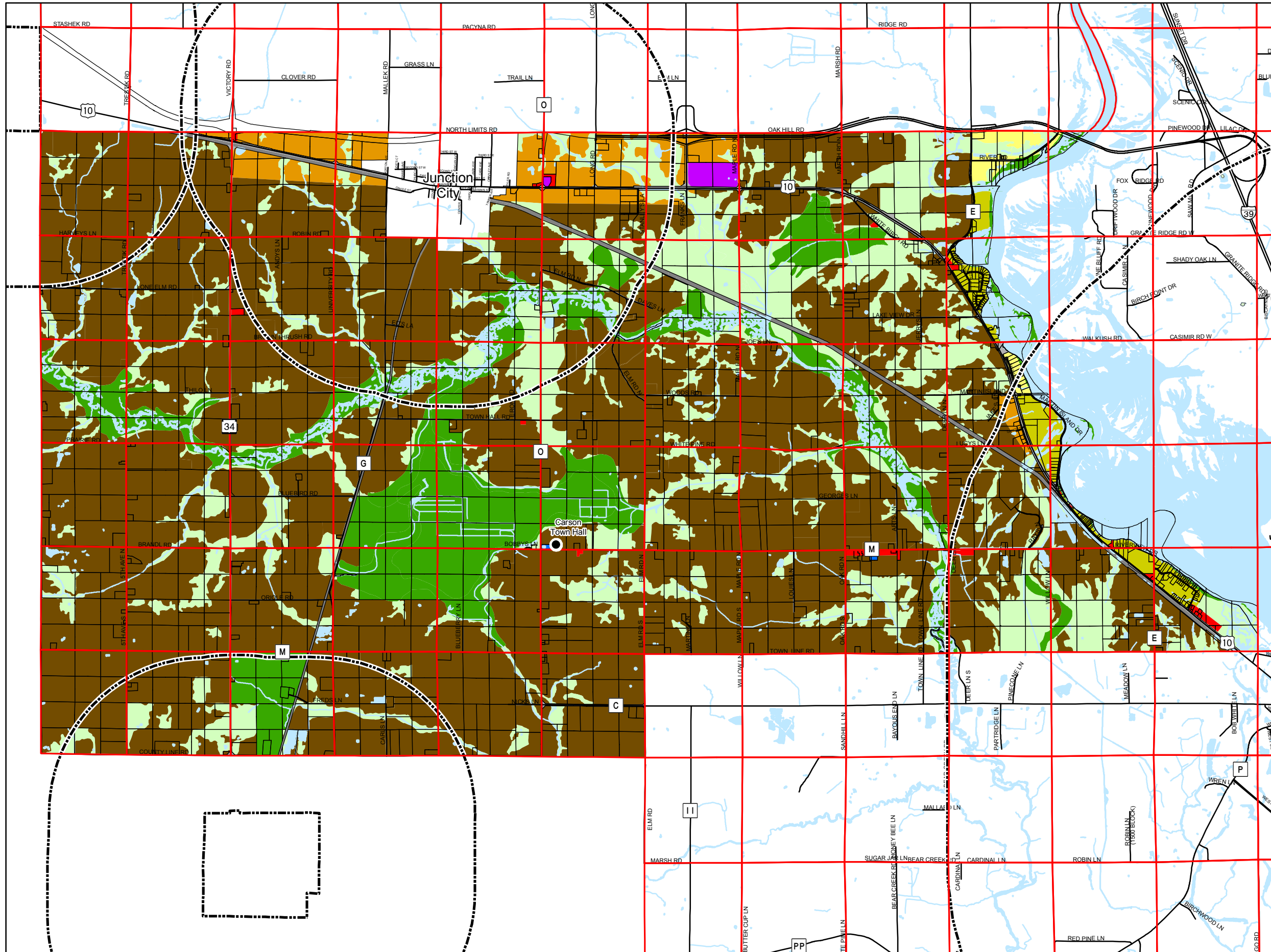
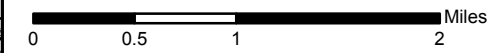


Map 8.2 Future Land Use



Land Use

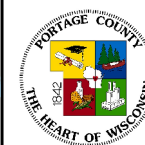
- Low Density Residential
- Industrial
- Commercial
- Institutional
- Medium Density Residential
- L-2 Intermediate Ag
- L-3 Mixed Use / Limited Ag
- Natural Areas - Limited Use
- Natural Areas - Protected
- Road Right-of-Way
- Railroad
- Extraterritorial Boundaries



Source: Town of Carson (2004)
Portage County Planning & Zoning (2004)

Map Adopted: March 23, 2005

Town of Carson Comprehensive Plan



Portage County
Planning & Zoning
1462 Strongs Ave.
Stevens Point, WI 54481