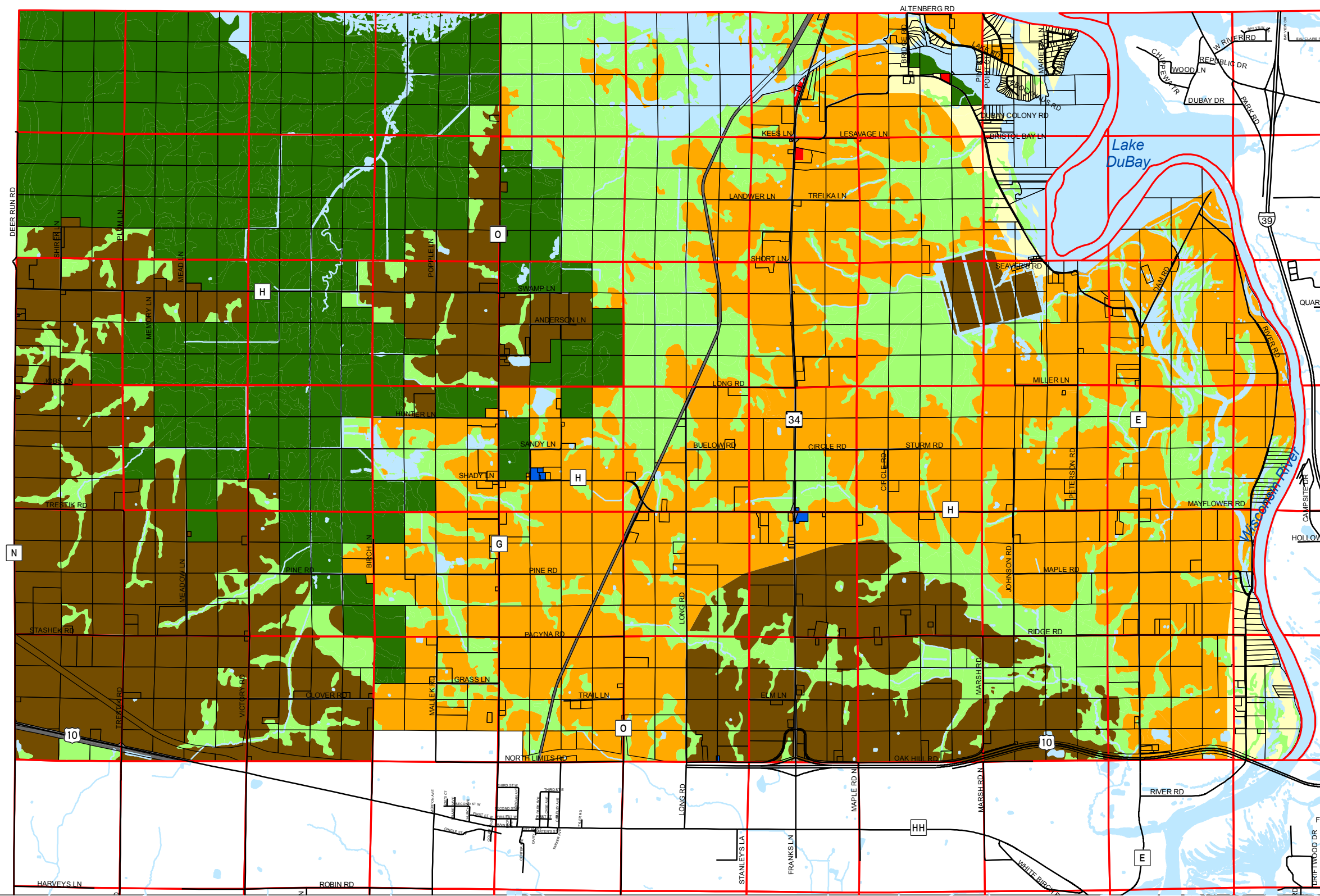
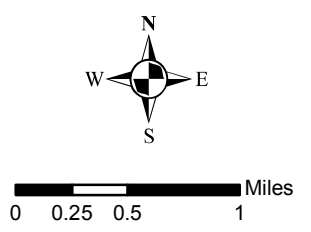


# Map 8.2 Future Land Use



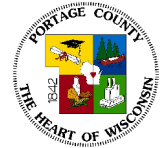
- Future Land Use**
- Medium Density Residential
  - Commercial
  - Institutional
  - L2 - Intermediate Agriculture
  - L3 - Limited Agriculture/Mixed Use
  - Natural Areas - Limited
  - Natural Areas - Protected
  - Right-of-Way
  - Railroad



Source: Town of Eau Pleine (2004)  
Portage County Planning & Zoning (2004)

Adopted: July 13, 2005

## Town of Eau Pleine Comprehensive Plan



Portage County  
Planning & Zoning  
1462 Strongs Ave.  
Stevens Point, WI 54481