

# Becker Lake

## Final Results

### Portage County Lake Study

University of Wisconsin-Stevens Point, Portage County Staff and Citizens

#### **What can you learn from this study?**

*You can learn a wealth of valuable information about:*

- *Critical habitat that fish, wildlife, and plants depend on*
- *The current diagnosis of your lake – good news and bad news*

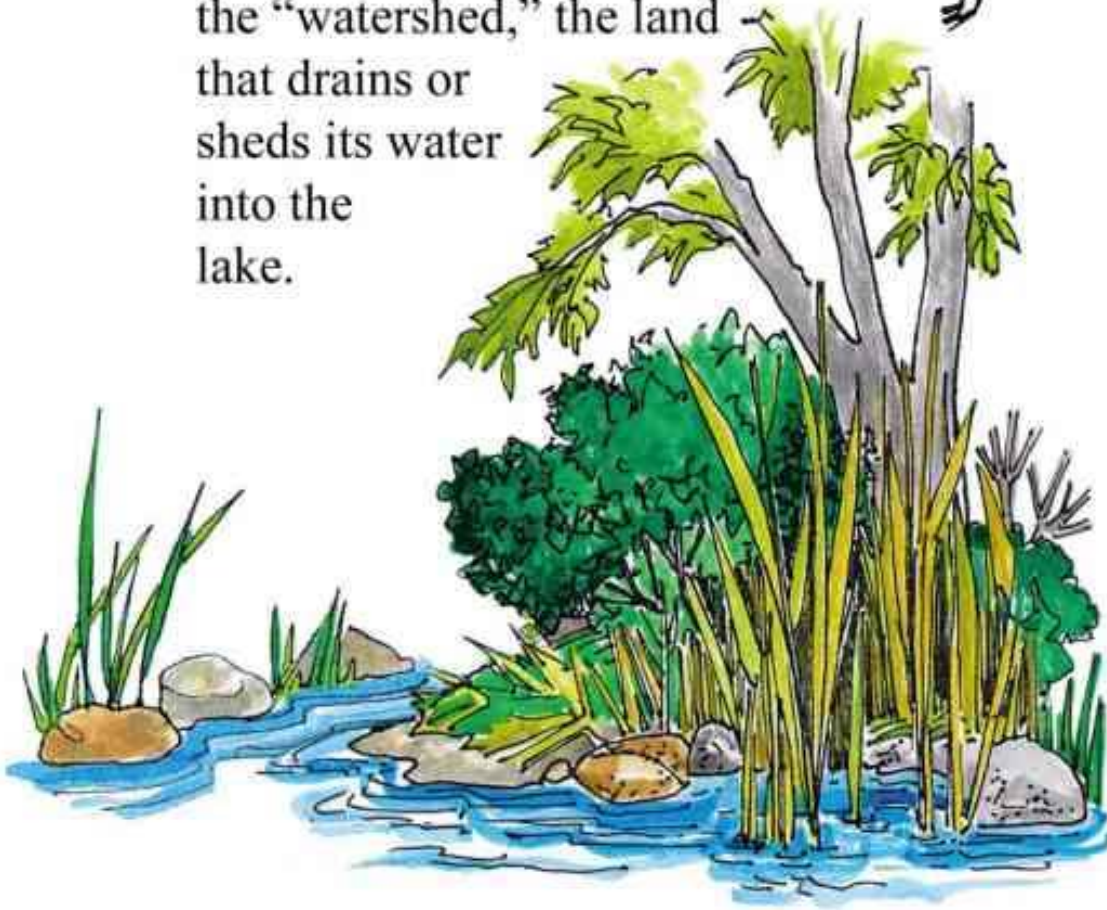
#### **What can you DO in your community?**

*You can share this information with the other people who care about your lake and then plan together for the future.*

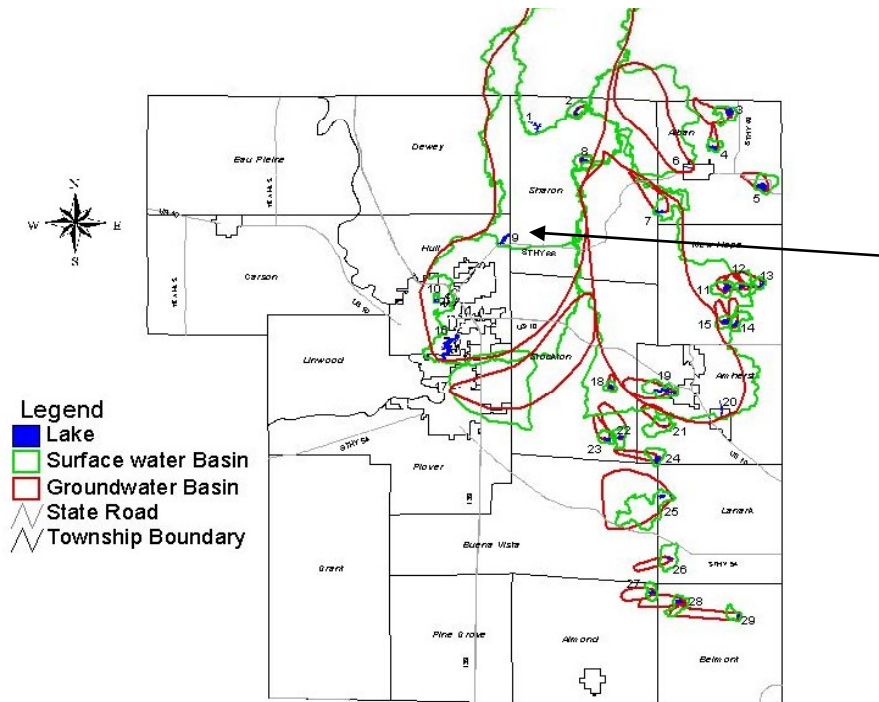
- ✓ *Develop consensus about the local goals and objectives for your lake.*
- ✓ *Identify available resources (people, expertise, time, funding).*
- ✓ *Explore and choose implementation tools to achieve your goals.*
- ✓ *Develop an action plan to achieve your lake goals.*
- ✓ *Implement your plan.*
- ✓ *Evaluate the results and then revise your goals and plans.*

**To protect**

**the lake** we must protect  
the “watershed,” the land  
that drains or  
sheds its water  
into the  
lake.



# Becker Lake ~ Location



## Becker Lake

Northeast of Stevens Point, North of Highway 66, East of Ellis Rd., 2 miles north of Ellis.

**Surface Area:** 32 Acres  
**Maximum Depth:** 4 feet  
**Lake Volume:**

# Becker Lake



## Water Flow

- Becker Lake is a bog lake that is classified as a seepage lake by the DNR
- Water enters Becker Lake from precipitation and some runoff
- Water exits the lake through evaporation
- Since Becker Lake is not connected to groundwater, it does not have a groundwater watershed



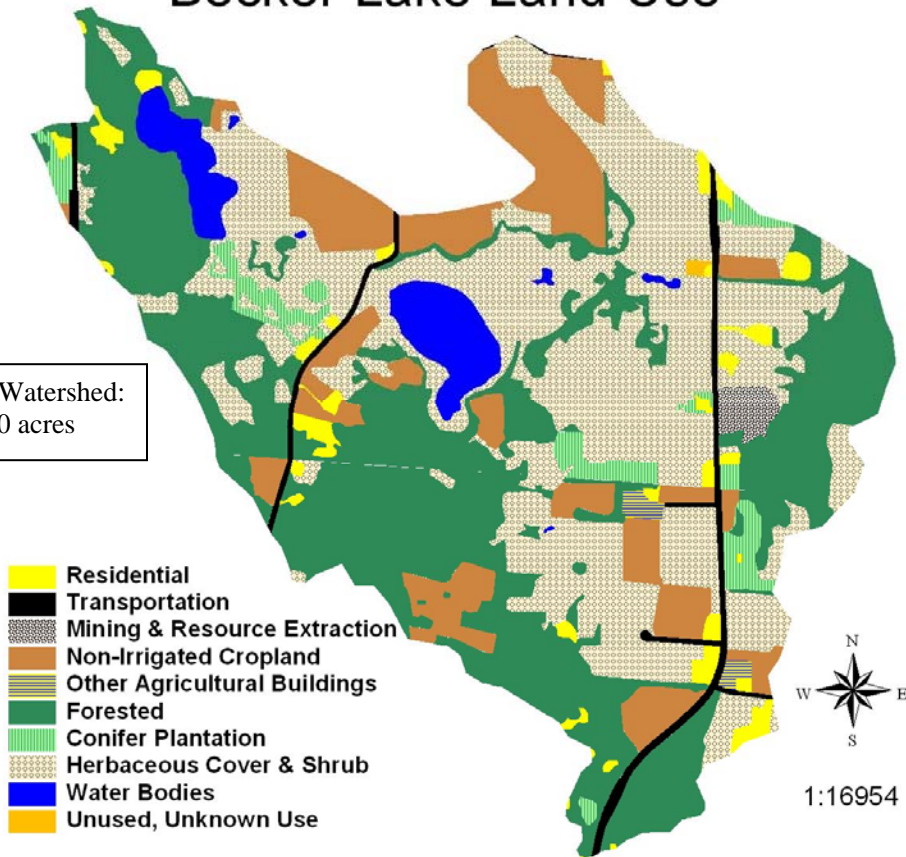
# Becker Lake ~ Land Use in the Surface Watershed



**Surface Watershed:** The land area where water runs off the surface of the land and drains toward the lake.

## Becker Lake Land Use

Surface Watershed:  
1310 acres

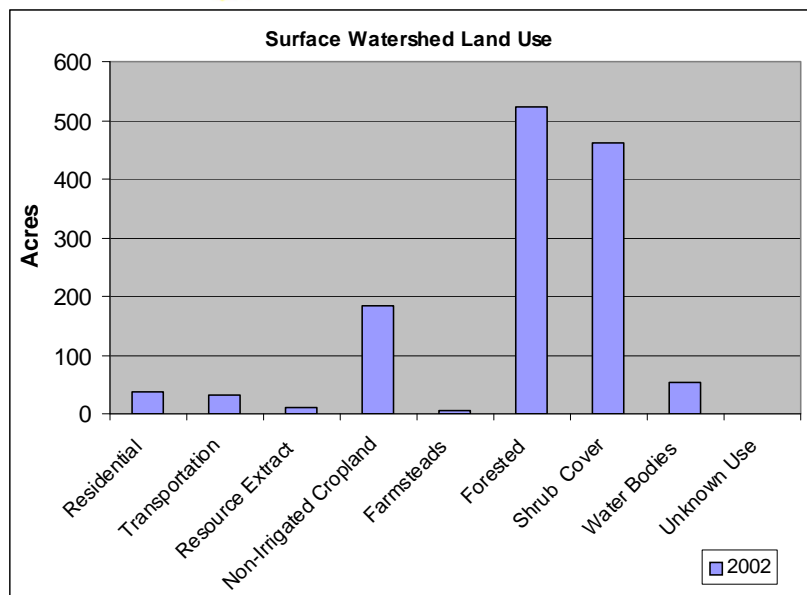


### Current Predominant Land Use

- Around the lake: shrub cover, forest land, and some non-irrigated cropland
- In the watershed: forest land, shrub cover, and non-irrigated cropland

### Surface Watershed Land Use

- Watershed is dominated by forest land and shrub cover
- Significant amounts of non-irrigated cropland, transportation, and residential land uses



# Becker Lake ~ Aquatic Plants

---

Aquatic plant surveys were conducted in each lake. More detailed information is available in the final report.

## **Aquatic Plant Survey**

Becker Lake is a small, shallow lake with an adjacent bog. Although the lake itself has relatively few aquatic species, there have been 87 species of vascular plants found in Becker Lake, on the bog mat, in the bog, in the shrub thicket and conifer swamp, or on the shore. This is the highest number of vascular plants found in the Portage County lakes. Several species of peatmosses also grow in the bog. Rooted submersed species are uncommon, consisting mostly of two pondweeds, white buttons, needle spikerush, Farwell's milfoil, and coontail. As would be expected in a lake with shallow water and poor light penetration, rooted floating-leaf species are fairly abundant, including white water-lily, yellow pond-lily, and water-shield. Bladderworts are quite common.

The minerotrophic bog on the northwest side of the lake has a rich flora. Public access from County land has led to the formation of some trails and damage to the fragile bog mat, but this access and proximity to Stevens Point makes the bog valuable for class field trips from UWSP.



# Becker Lake ~ Aquatic Plants

---

## **Invasive Exotic Aquatic Plants**

Invasive species displace native species, disrupt ecosystems, and affect citizen's livelihoods and quality of life. They hamper boating, swimming, fishing, and other water recreation, and take an economic toll on commercial, agricultural and aquatic resources.

(Wisconsin DNR)

Aquatic plants surveys revealed that some of the lakes in the study have invasive aquatic plants present.

**Eurasian milfoil** (*Myriophyllum spicatum*) was present in

- Bear Lake
- Lake Emily
- Lake Joanis
- Jordan Pond
- McDill Pond
- Springville Pond
- Thomas Lake

**Curly leaf pondweed** (*Potamogetan crispis*) was identified in

- Spring Lake
- Amherst Millpond

Contact the Portage County Land Conservation Department for additional information.



# Becker Lake ~ What can you do to help?

## We Can All Help Take Care Of Our Lake

*A lake is a magnificent water resource. The quality of its water is a reflection of what happens on the land that surrounds it.*



### Lake Users:

- ✓ Run boat engines efficiently.
- ✓ Observe no/low wake zones.
- ✓ Refuel away from water.
- ✓ Dispose of trash properly
- ✓ Remove all aquatic plants from boats and trailers.



### Land Owners:

- ✓ Control soil erosion.
- ✓ Keep livestock out of lakes and streams.
- ✓ Control manure runoff.
- ✓ Carefully manage nutrients and pesticides.
- ✓ Learn to identify and look for invasive species.



### Home Owners:

- ✓ Leave natural vegetation buffers in place or replace them if they have been removed.
- ✓ Eliminate the use of fertilizer or use low/no phosphorus fertilizer.
- ✓ Eliminate or minimize use of pesticides.
- ✓ Control soil erosion.
- ✓ Clean up after pets.
- ✓ Learn to identify and look for invasive species.



### Project support provided by:

- Wisconsin DNR Lake Protection grants
- UW-Stevens Point
- Portage County
- Portage County Citizens

### Study Contacts:

Portage County: Steven Bradley at 346-1334

UW- Stevens Point: Nancy Turyk at 346-4155



# Becker Lake ~ Primary Researchers

---

## **Aquatic Plants**

Dr. Robert Freckmann

## **Land Use Coverages/Watersheds**

Steve Bradley (Portage County Conservationist)

## **Planning Assistance**

Lynn Markham

## **Water Quality/Watersheds**

Becky Cook

Dr. Paul McGinley

Dr. Byron Shaw

Dick Stephens

Nancy Turyk

Special thanks to UWSP undergraduate and graduate students and local citizens  
for their assistance!

