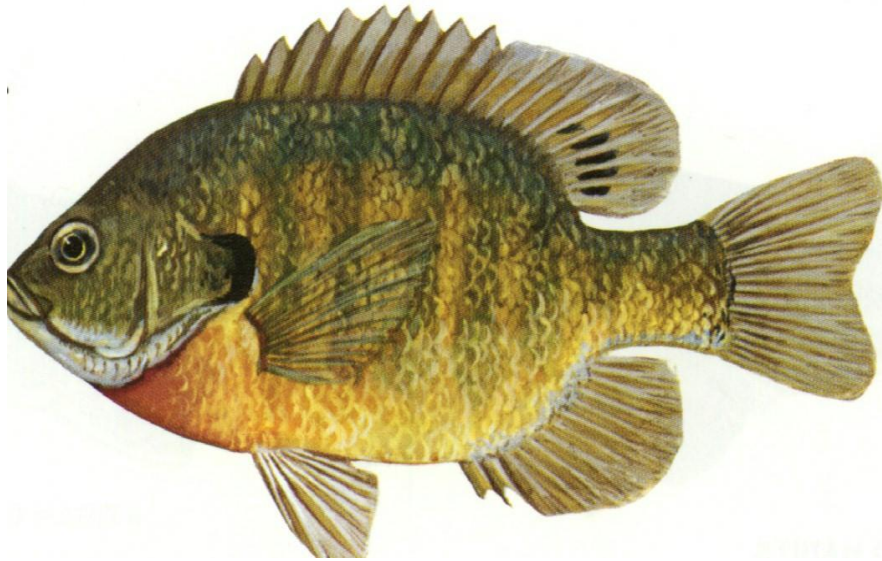


# The Fishery of Lime Lake

# Historical changes in Lime Lake:

	# and range
• Species Richness 2002/2003	12 (7-15)
• Newly Documented Species 2002/2003	1 (1-6)
• Previously Documented Species Richness	13 (6-19)
• Lost/Undocumented Species	2 (2-10)
• Total (Past and Present) Species Richness	14 (9-22)
• Percent Species Lost/Undocumented 2002/2003	14% (14-59)

# Fish new to Lime Lake



bluegill

X



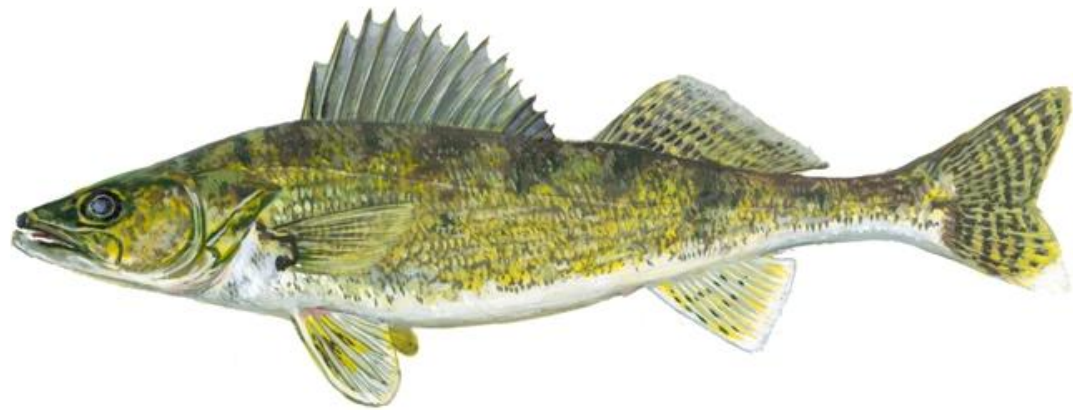
Pumpkinseed

Hybrid

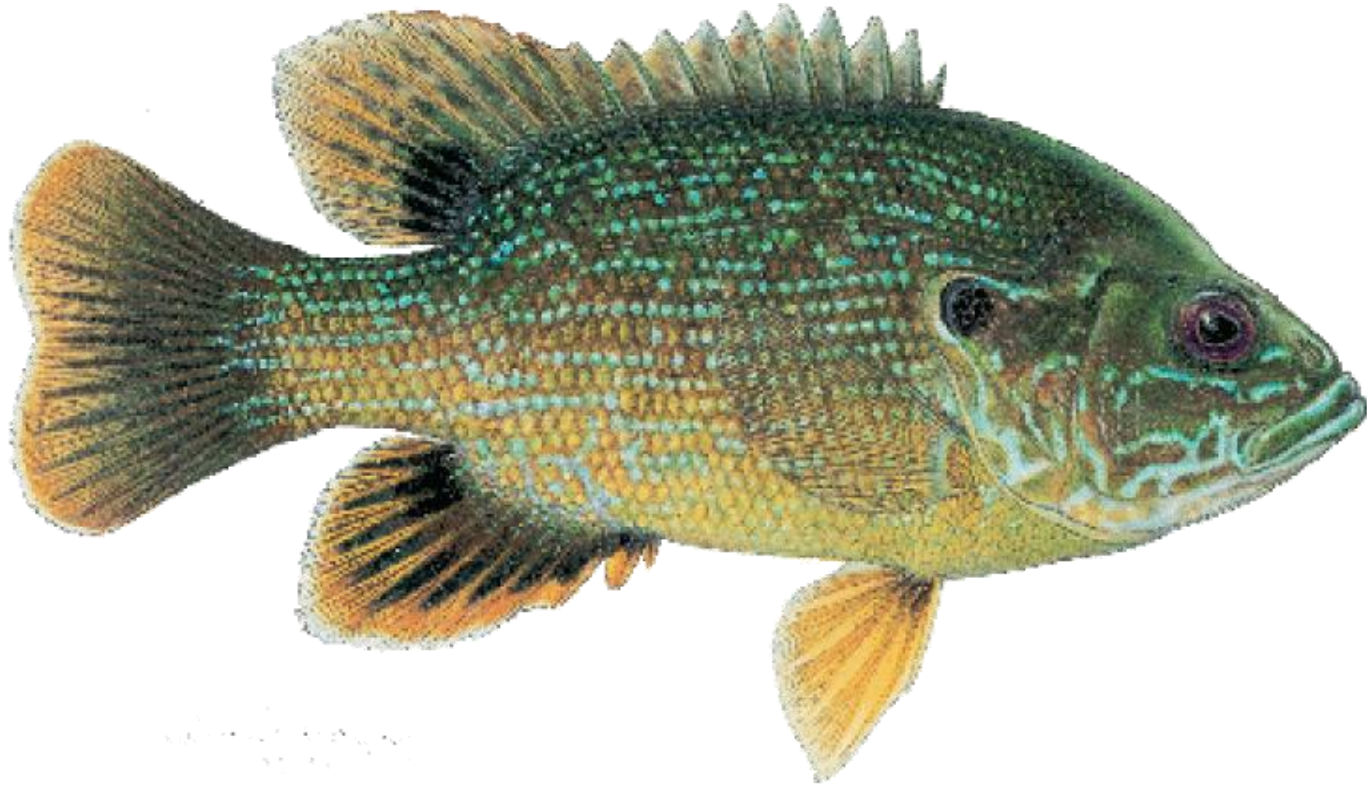
# Fish species lost



Iowa darter



Uncommon fish



Green sunfish

# Indicator species



Yellow bullhead



Central mudminnow

# General findings all Portage Co. lakes

- # species correlated with physical characteristics of lakes and disturbance
  - Deeper and larger lakes supported more species
  - # species decreased with a measure of shoreline disturbance

- Lakes with permanent inlet or outlet had 20% more species
- Lakes with high development had 20% fewer species

# Recommendations

- Protect and enhance in-lake shoreline cover
- Manage for native fish assemblages
- Do not stock non-native fish
- Maintain large native predatory fish