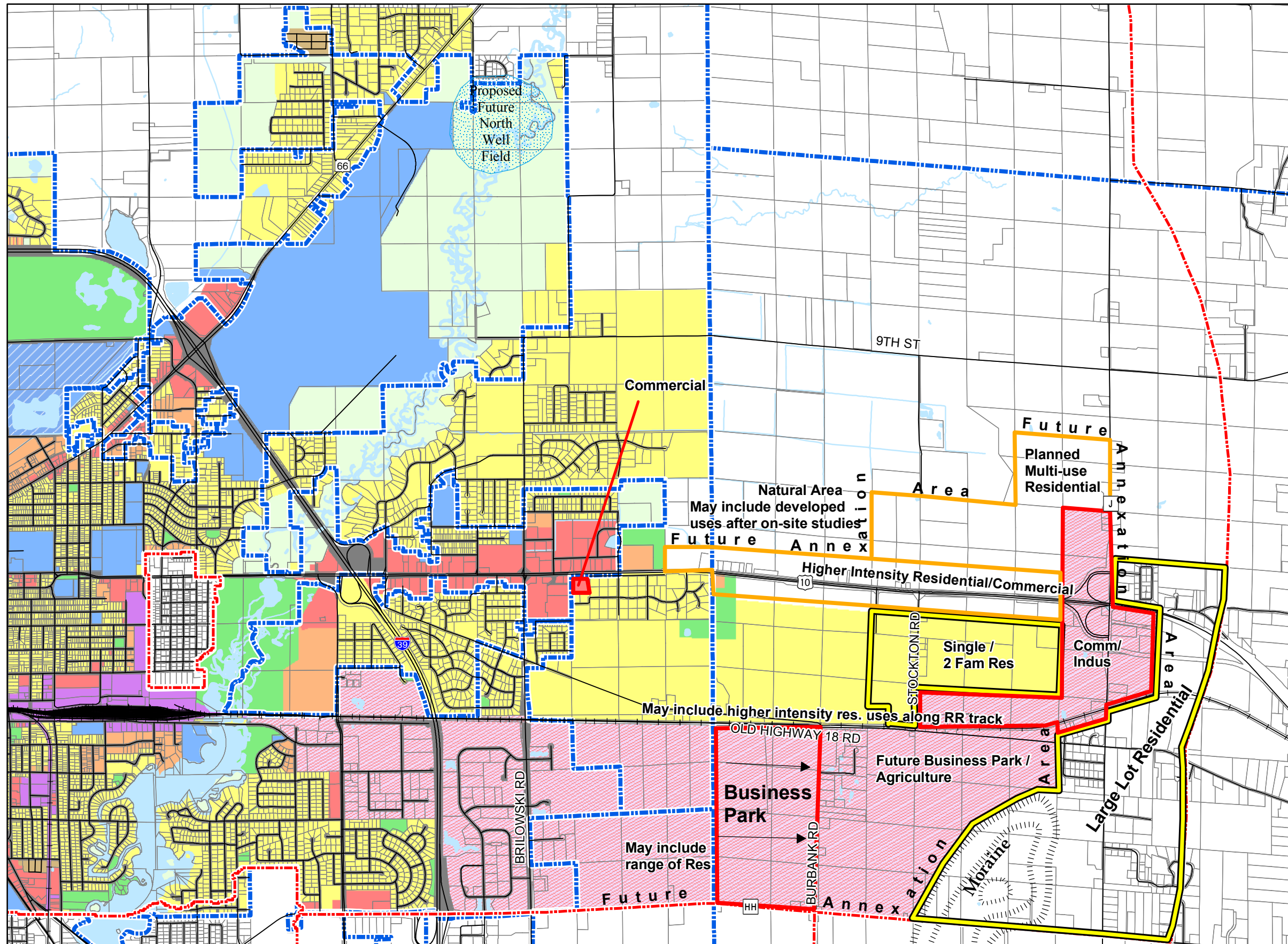
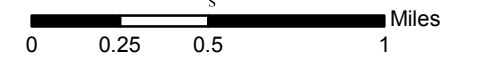


Map 4.7 Stevens Point Extraterritorial Future Land Use Recommendations



Future Land Use

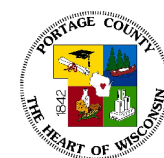
- Residential
- Multi-family (3+ units)
- Mobile Home Park
- Commercial / Office
- Office / Multi-Family
- Downtown District
- Business Park District
- Institutional / Government
- UWSP
- Industry
- Park
- Not Developable / Restrictive Ownership
- Vacant
- Road Right-of-Way
- Water Bodies
- Municipal Boundary
- Extraterritorial Boundary



Source: City of Stevens Point (2005)
Portage County Planning & Zoning (2005)

Adopted: November 14, 2007
Approved by
Wisconsin DNR: October 22, 2008

Stevens Point Urban Area Sewer Service Plan



Portage County
Planning & Zoning
1462 Strongs Ave.
Stevens Point, WI 54481