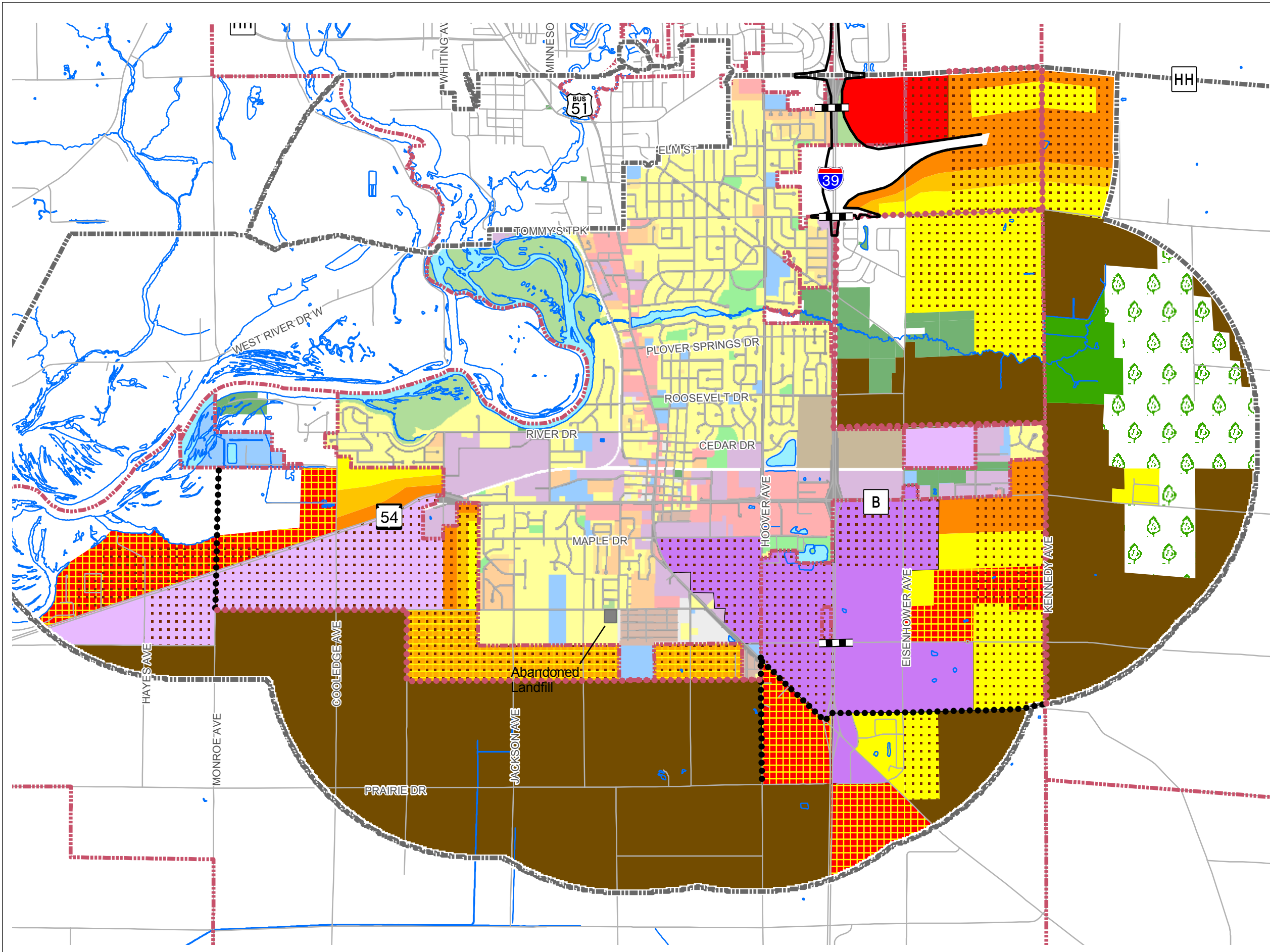
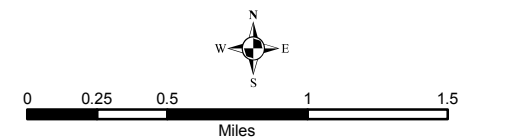


Map 4.8 Village of Plover Extraterritorial Future Land Use Recommendations



- Single Family
- Plex (2-4 units)
- Multi-family (5+ units)
- Mobile Home Park
- Mixed Residential
- Commercial Residential
- Commercial / Industrial
- Commercial / Office
- Institutional / Governmental
- Industry
- Agriculture
- Not Developable
- Forest
- Vacant
- Agriculture Transition
- Road Right-of-Way
- Extraterritorial Boundary
- Municipal Boundaries
- Proposed 20 Year Planning Boundary
- Proposed Permanent Boundary
- Streets
- Sewer Mains

Source:
Portage County Planning and Zoning Department
Extraterritorial Boundary, 2005,
Municipal Boundaries, 2005



Planning and Zoning Department
1462 Strongs Avenue
Stevens Point, WI 54481
Approved: November 14, 2007
Approved by Wisconsin DNR: October 22, 2008