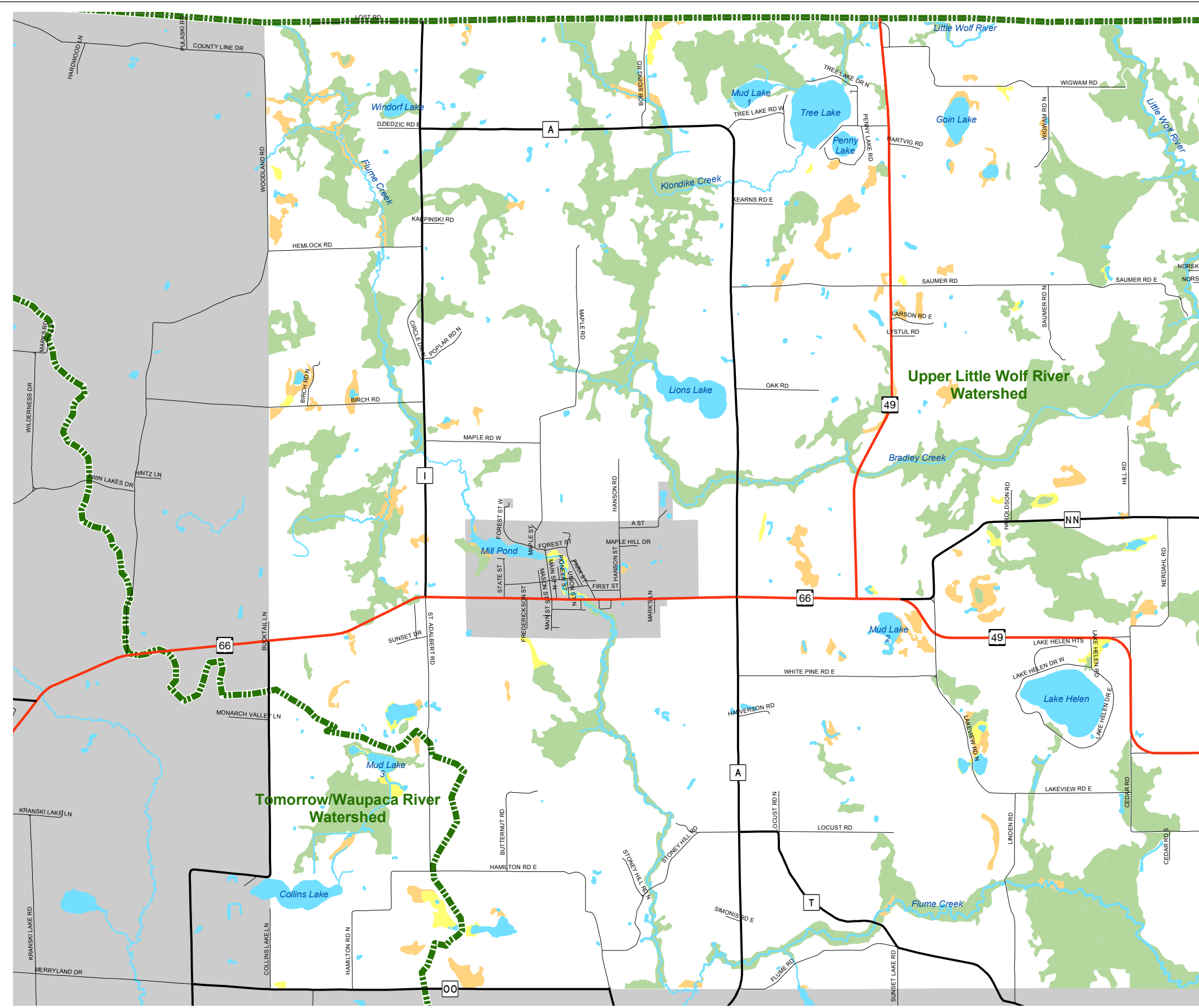
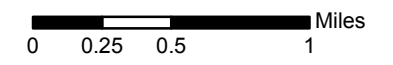


# Map 5.4 Wetlands & Watersheds



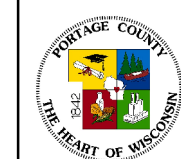
- Wetland Class**
- Emergent / Wet Meadow
  - Scrub / Shrub
  - Forested
- Watershed Boundary



Source: Portage County Planning & Zoning (2009)  
Wisconsin Wetlands Inventory (1985)

Adopted: January 6, 2009

## Town of Alban Comprehensive Plan



Portage County  
Planning & Zoning  
1462 Strongs Ave.  
Stevens Point, WI 54481