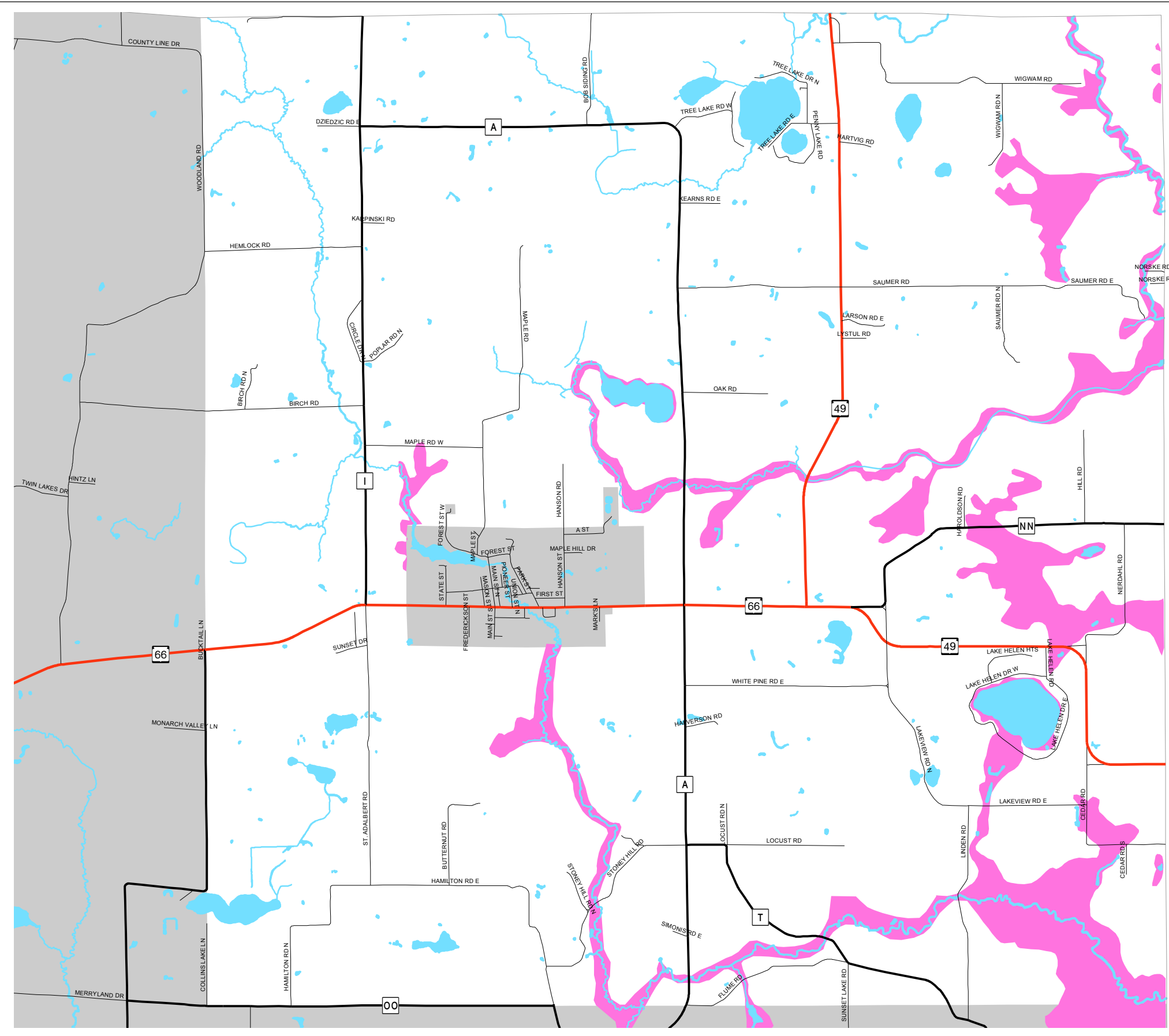
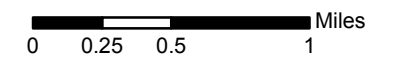


Map 5.5 Floodplain



 100 Year Floodplain



Source: Portage County Planning & Zoning (2009)
Federal Emergency Management Agency(1982)

Adopted: January 6, 2009

Town of Alban Comprehensive Plan



Portage County
Planning & Zoning
1462 Strongs Ave.
Stevens Point, WI 54481