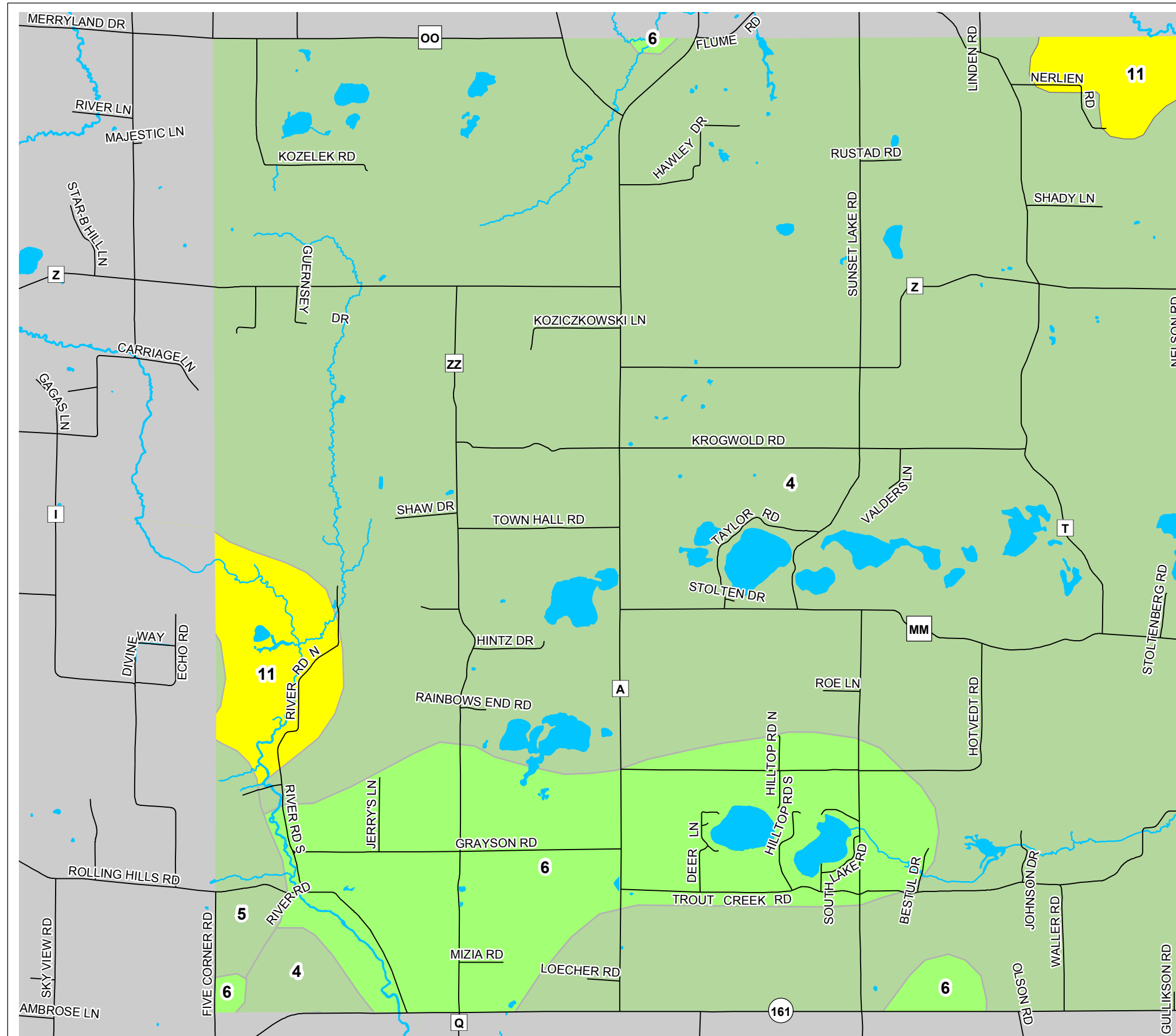


Map 5.3 General Soil Associations



Soil Associations

Soils formed in loamy or silty materials and the underlying residuum from bedrock

- 1 Kert-Norgo Variant Association
- 2 Meadland-Rozellville-Dolph Association
- 3 Point-Dancy-Mosinee Association

Soils formed in sandy glacial drift

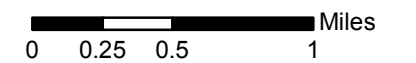
- 4 Wyocena-Rosholt Association
- 5 Kranski-Coloma-Mecan Association

Soils formed mainly in outwash sand and gravel or sand

- 6 Richford-Rosholt-Billett Association
- 7 Plainfield-Friendship Association
- 8 Leola-Pearl Association
- 9 Roscommon-Meehan-Markey Association

Soils formed in alluvial or organic deposits

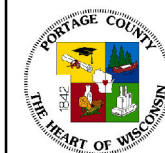
- 10 Alluvial Land, Wet-Dunnville Association
- 11 Markey-Seelyeville-Cathro Association



Source: Portage County Planning & Zoning (2017)
U.S.D.A. Soil Conservation Service (1977)

Town Board Adopted: October 24, 2017
County Board Adopted: December 19, 2017

Town of New Hope Comprehensive Plan



Portage County
Planning & Zoning
1462 Strongs Ave.
Stevens Point, WI 54481