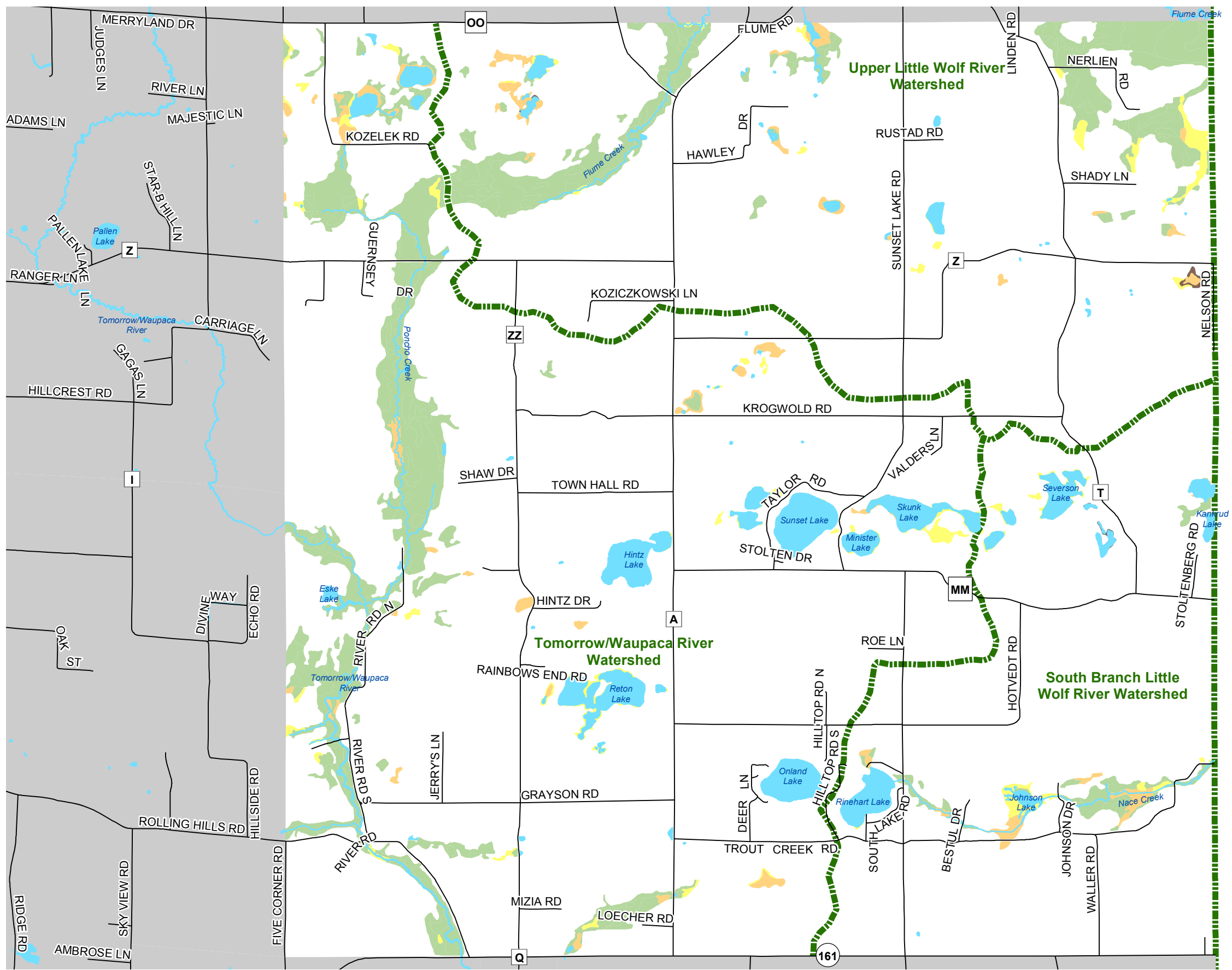
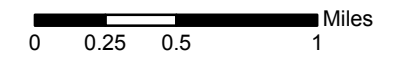


Map 5.4 Surface Water, Watersheds & Wetlands



- Wetland Class**
- Emergent / Wet Meadow
 - Scrub / Shrub
 - Forested
 - Watershed Boundary



Source: Portage County Planning & Zoning (2017)
Wisconsin Wetlands Inventory (2016)
Natural Resource Conservation Service (1998)

Town Board Adopted: October 24, 2017
County Board Adopted: December 19, 2017

Town of New Hope Comprehensive Plan



Portage County
Planning & Zoning
1462 Strongs Ave.
Stevens Point, WI 54481