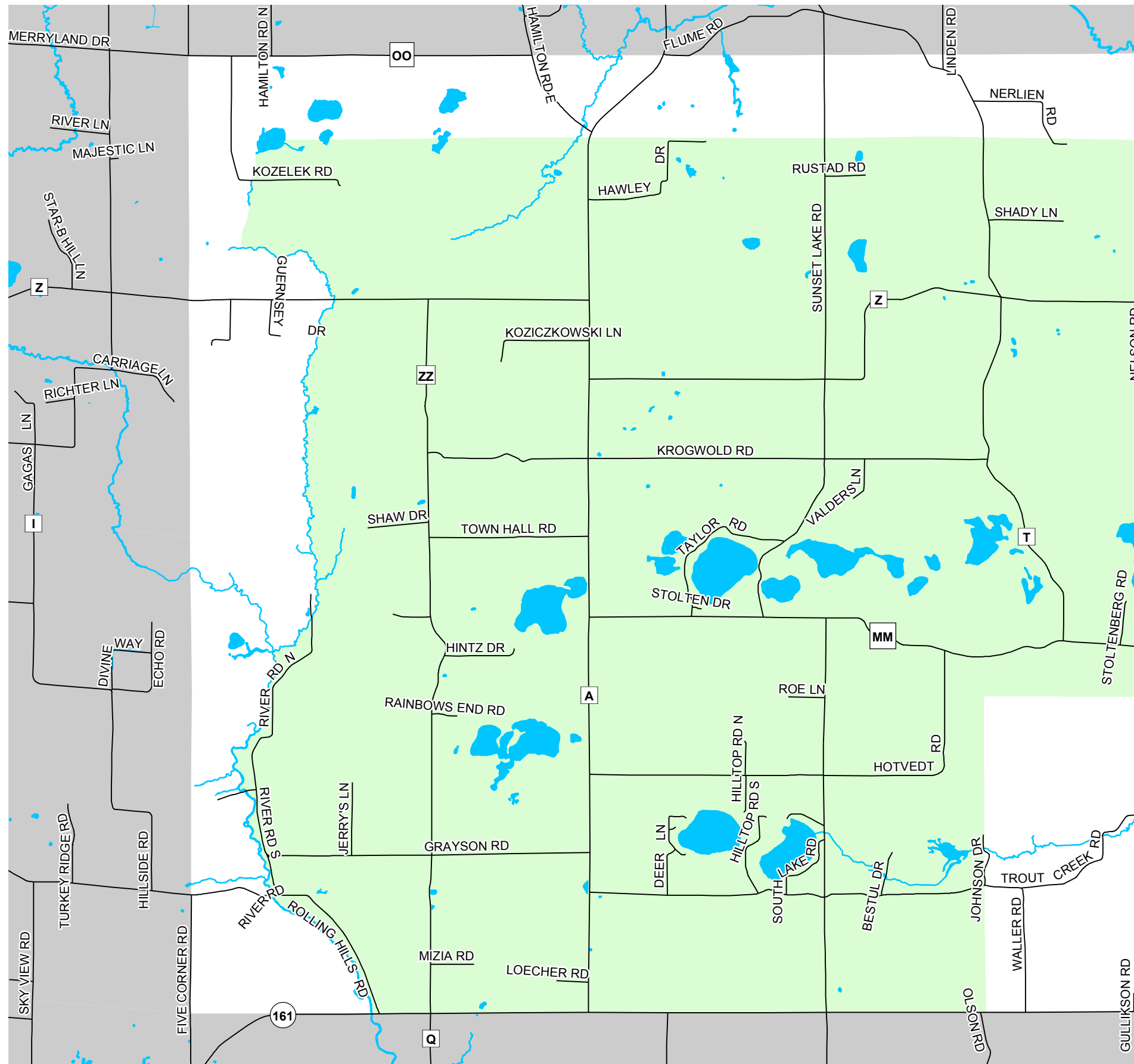
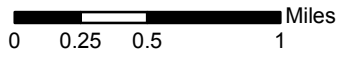


Map 5.7 Atrazine Prohibition Area



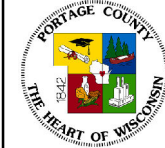
 Atrazine Prohibition Area



Source: Portage County Planning & Zoning (2017)

Town Board Adopted: October 24, 2017
County Board Adopted: December 19, 2017

Town of New Hope Comprehensive Plan



Portage County
Planning & Zoning
1462 Strongs Ave.
Stevens Point, WI 54481