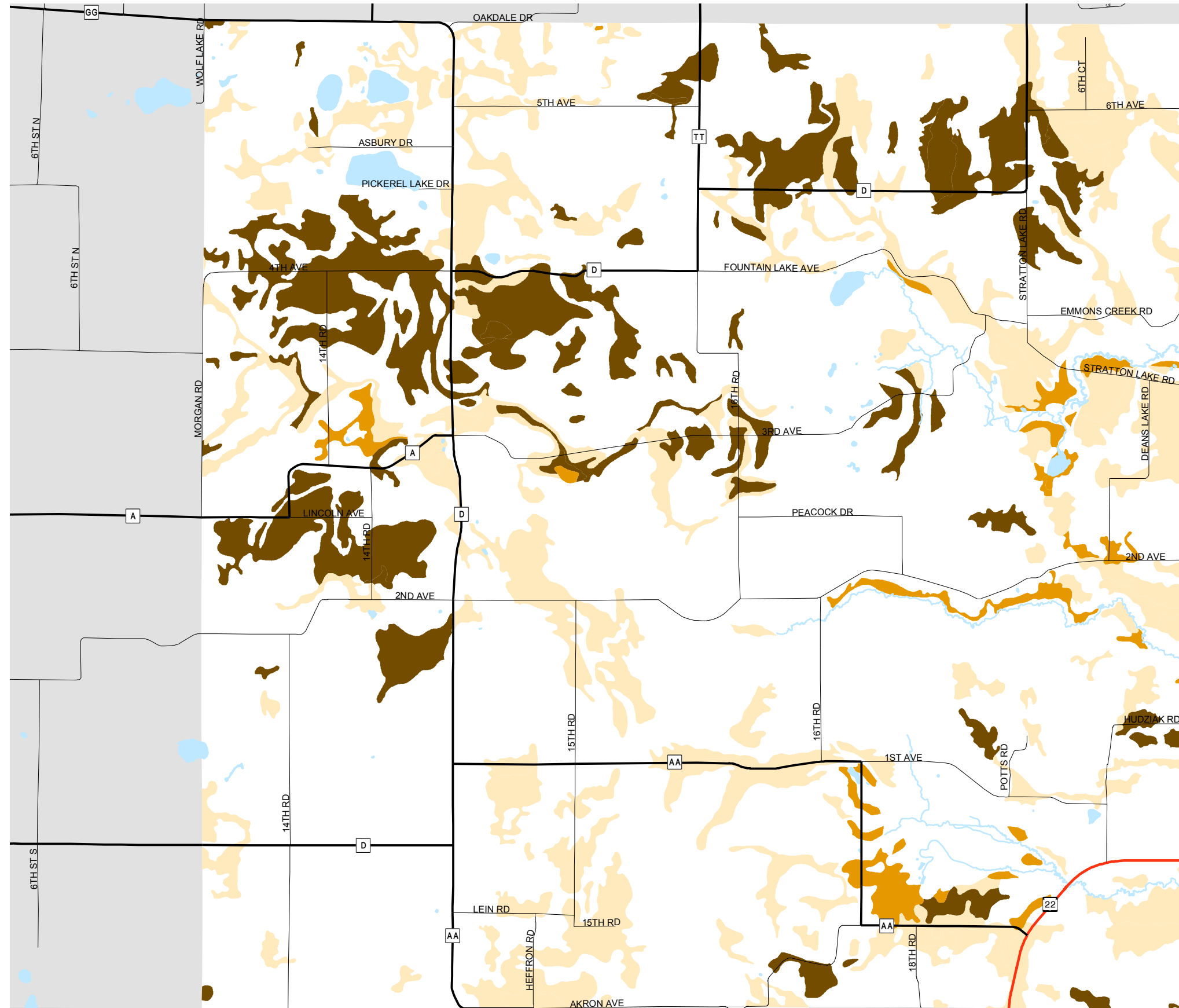
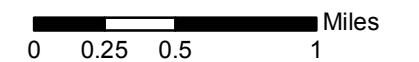
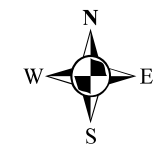


Map 5.1 Highly Productive Agricultural Soils



Soil Class

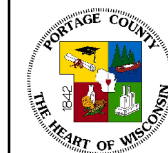
- Prime Agriculture**
 ROSHOLT LOAM, 2 TO 6 PERCENT SLOPES
 ROSHOLT LOAM, LOAMY SUBSTRATUM, 0 TO 2 PERCENT SLOPE
 WYOCENA SANDY LOAM, 2 TO 6 PERCENT SLOPES
 MECAN LOAMY SAND, 2 TO 6 PERCENT SLOPES
 BILLETT SANDY LOAM, 0 TO 2 PERCENT SLOPES
- Prime Ag if Drained**
 OESTERLE LOAM, SILTY SUBSOIL VARIANT
 OESTERLE SANDY LOAM
- Prime Ag if Irrigated**
 FRIENDSHIP LOAMY SAND, 0 TO 3 PERCENT SLOPES
 RICHFORD LOAMY SAND, 0 TO 2 PERCENT SLOPES
 RICHFORD LOAMY SAND, 2 TO 6 PERCENT SLOPES



Source: Natural Resource Conservation Service (1998)
 Portage County Planning & Zoning (2004)

Adopted: June 14, 2005

Town of Belmont Comprehensive Plan



Portage County
 Planning & Zoning
 1462 Strongs Ave.
 Stevens Point, WI 54481