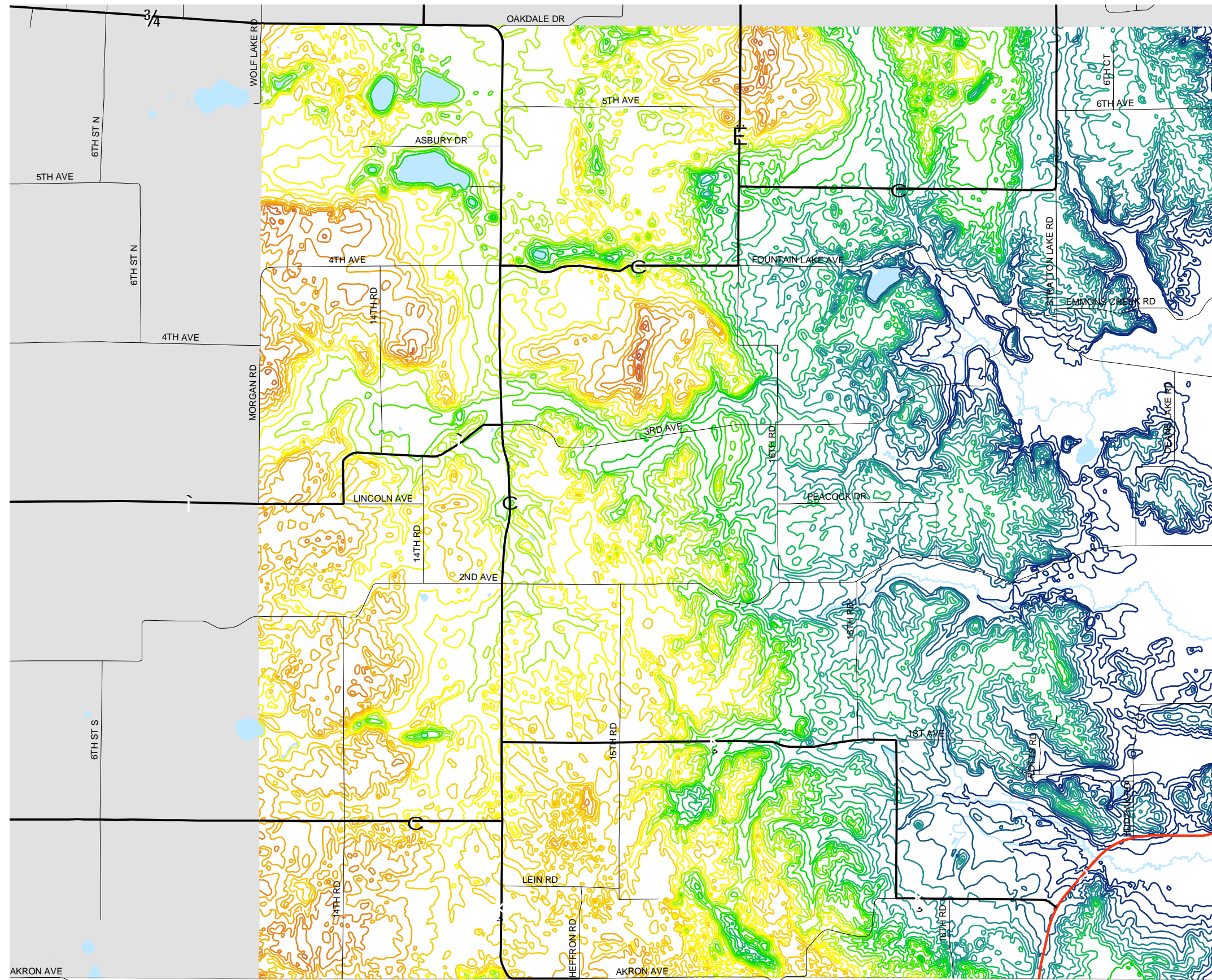
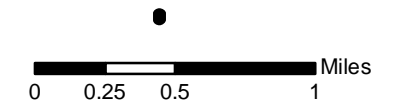


# Map 5.2 Topography



### Elevation (Ft.)

- 960 - 980
- 981 - 1000
- 1001 - 1020
- 1021 - 1040
- 1041 - 1060
- 1061 - 1080
- 1081 - 1100
- 1101 - 1120
- 1121 - 1140
- 1141 - 1160
- 1161 - 1180
- 1181 - 1200
- 1201 - 1220
- 1221 - 1240



Source: Portage County Planning & Zoning (2004)  
U.S. Geological Survey (1967-1971)

Adopted: June 14, 2005

## Town of Belmont Comprehensive Plan



Portage County  
Planning & Zoning  
1462 Strongs Ave.  
Stevens Point, WI 54481