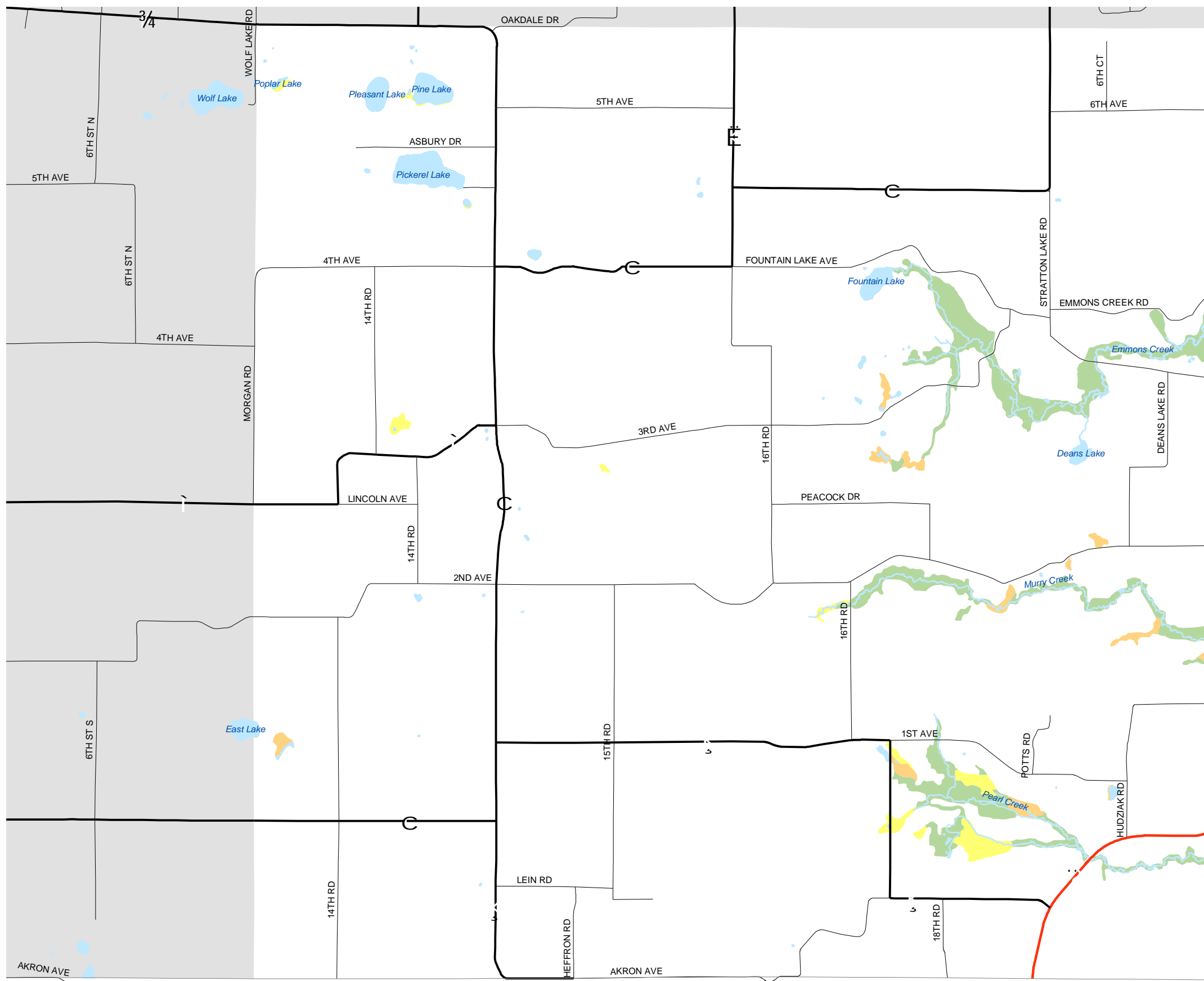
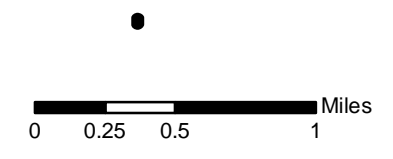


# Map 5.4 Wetlands



- Wetland Class**
- Emergent / Wet Meadow
  - Scrub / Shrub
  - Forested



Source: Portage County Planning & Zoning (2004)  
Wisconsin Wetlands Inventory (1985)

Adopted: June 14, 2005

## Town of Belmont Comprehensive Plan



Portage County  
Planning & Zoning  
1462 Strongs Ave.  
Stevens Point, WI 54481