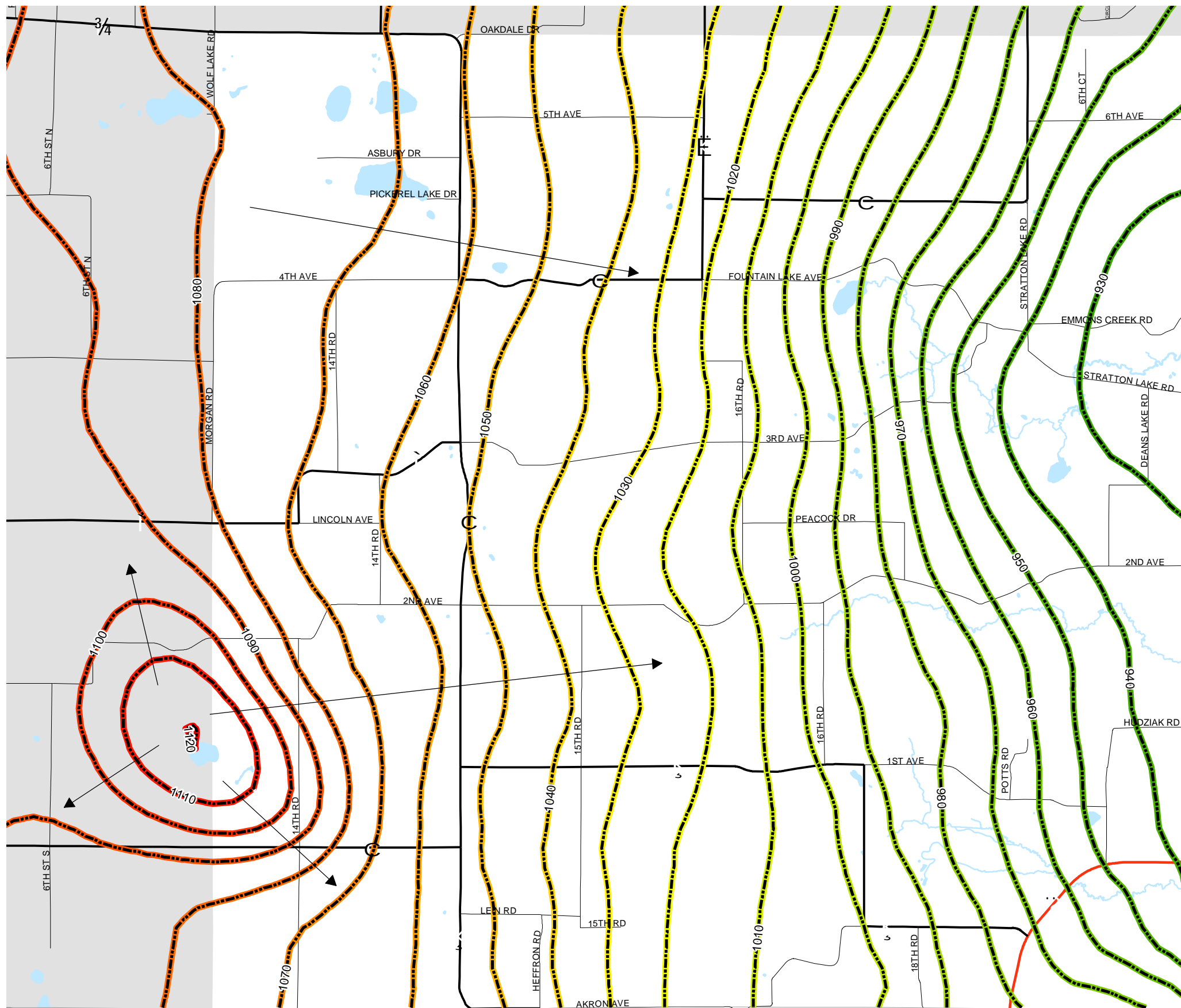


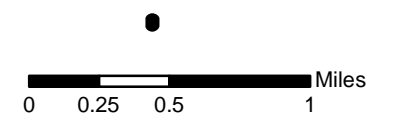
Map 5.5 Groundwater Flow



Groundwater Elevation (Ft)

	930		1030
	940		1040
	950		1050
	960		1060
	970		1070
	980		1080
	990		1090
	1000		1100
	1010		1110
	1020		1120

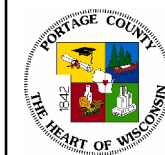
← Flow Direction



Source: Portage County Planning & Zoning (2004)

Adopted: June 14, 2005

Town of Belmont Comprehensive Plan



Portage County
Planning & Zoning
1462 Strongs Ave.
Stevens Point, WI 54481