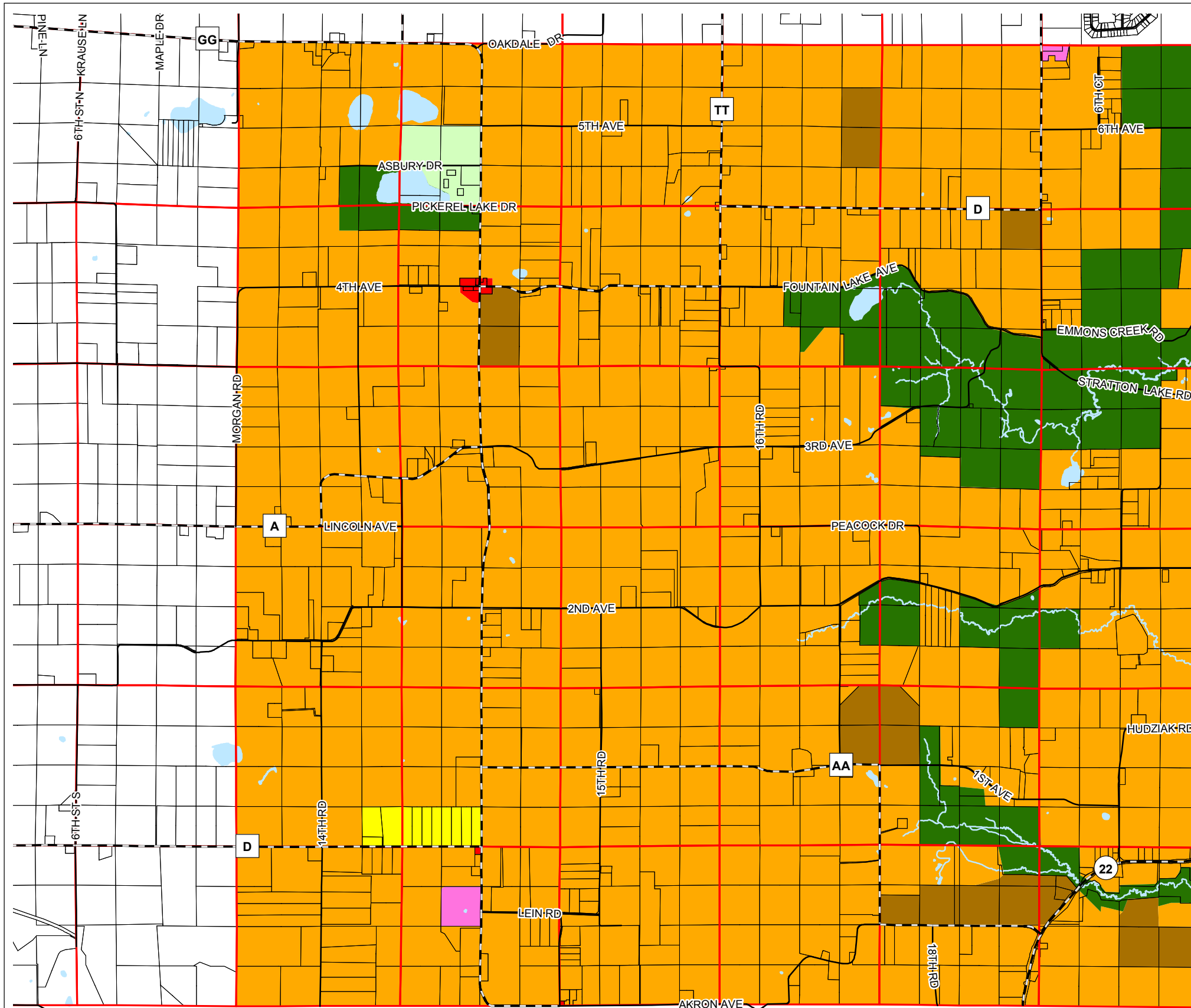
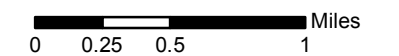


Map 8.2 Future Land Use



Future Land Use

- Low Density Residential
- Commercial
- General Agriculture (L-2)
- Mixed Use Agriculture (L-3)
- Industrial
- Natural Areas - Limited Development
- Natural Areas - Protected



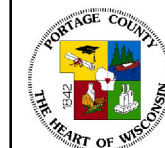
Source: Portage County Planning & Zoning (2004)

Adopted: June 14, 2005

Updated: April 20, 2006

Updated: December 19, 2006

Town of Belmont Comprehensive Plan



Portage County
Planning & Zoning
1462 Strongs Ave.
Stevens Point, WI 54481