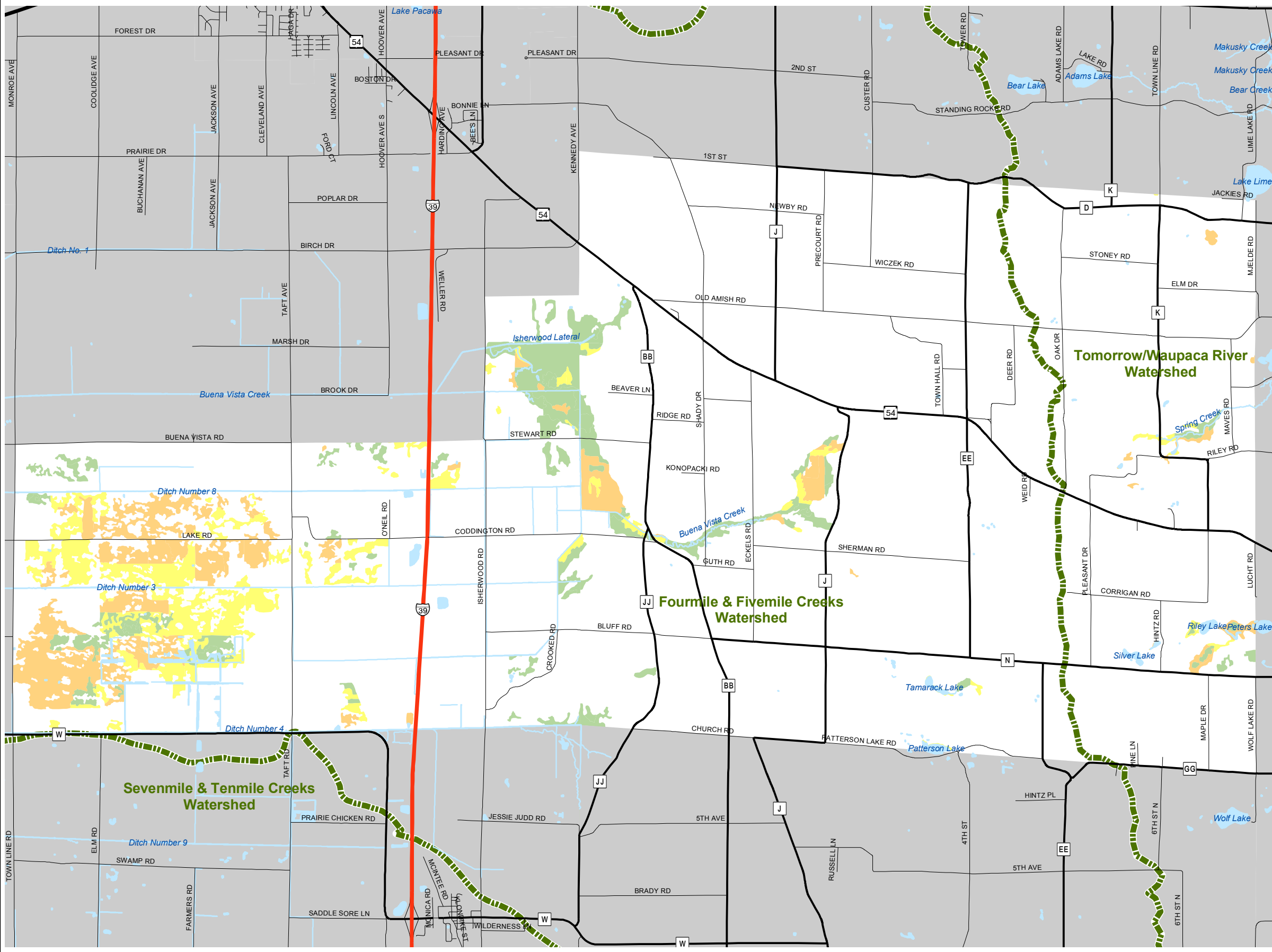
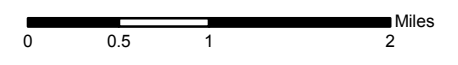


Map 5.4 Wetlands & Watersheds



- Wetland Class**
- Emergent/ Wet Meadow
 - Scrub/Shrub
 - Forested
- Watershed Boundary



Source: Portage County Planning & Zoning (2005)
DNR - Wisconsin Wetland Inventory (1986)

Adopted: September 12, 2005

Town of Buena Vista Comprehensive Plan



Portage County
Planning & Zoning
1462 Strongs Ave.
Stevens Point, WI 54481