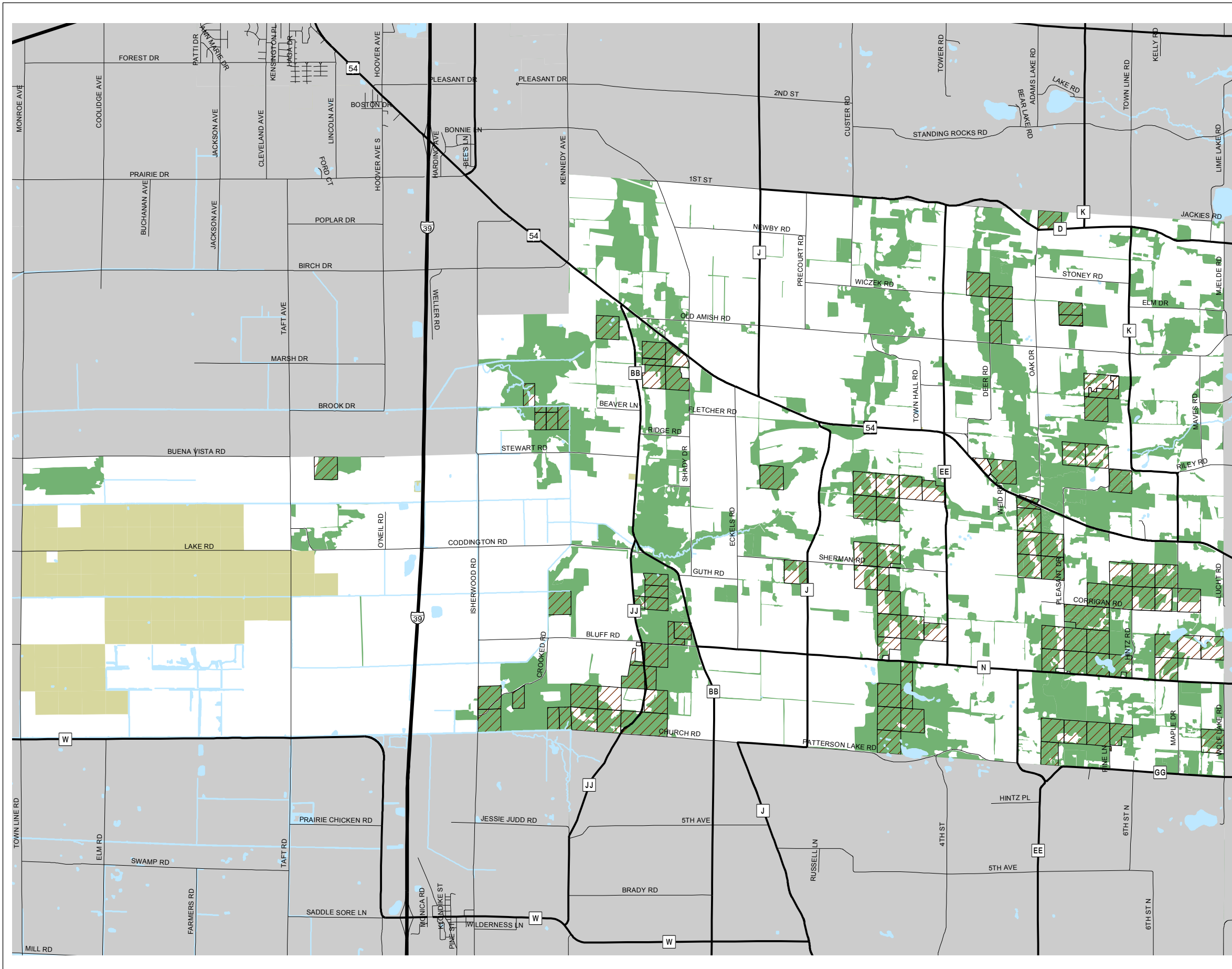
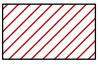




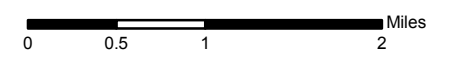
# Map 5.6 Forested Land



-  Managed Forest Land\*
-  Forested Land

\*The entire parcel is shown, however, only the wooded portion of each parcel is included in the MFL program

-  Prairie Chicken Management Area



Source: Portage County Planning & Zoning (2005)  
Adopted: September 12, 2005

## Town of Buena Vista Comprehensive Plan



Portage County  
Planning & Zoning  
1462 Strongs Ave.  
Stevens Point, WI 54481