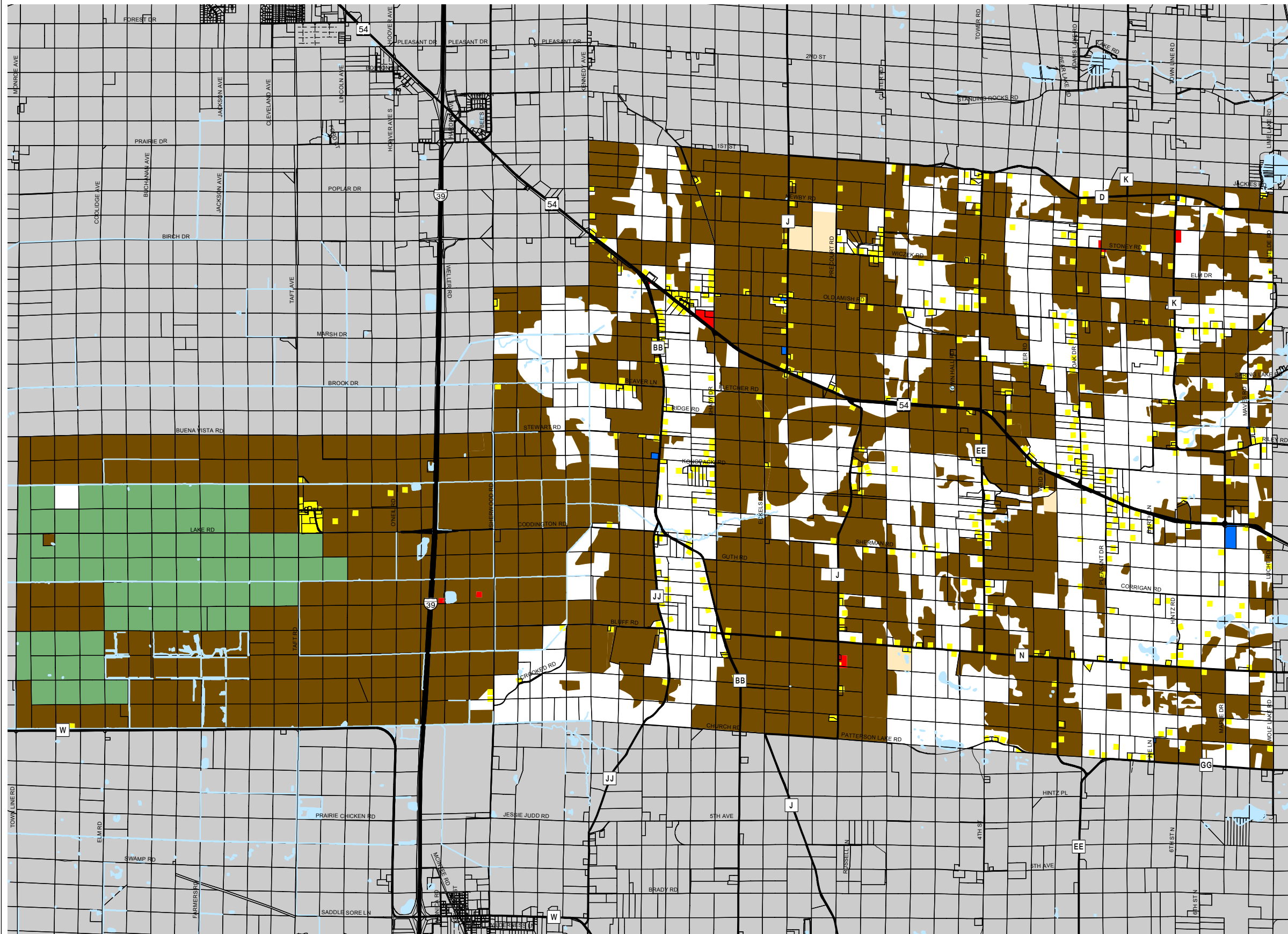
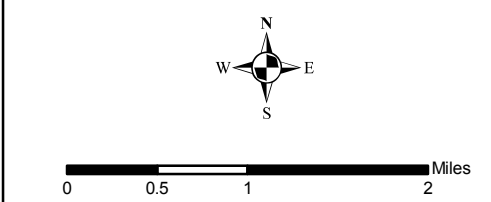


Map 8.1 Existing Land Use



- Existing Land Use**
- Residential
 - Commercial
 - Institutional
 - Agriculture
 - Parks & Recreation
 - Gravel Pit
 - Road Right-of-Way
 - Woodlands & Open Spaces



Source: Portage County Planning & Zoning (2005)
Town of Buena Vista (2005)
Adopted: September 12, 2005

Town of Buena Vista Comprehensive Plan



Portage County
Planning & Zoning
1462 Strongs Ave.
Stevens Point, WI 54481