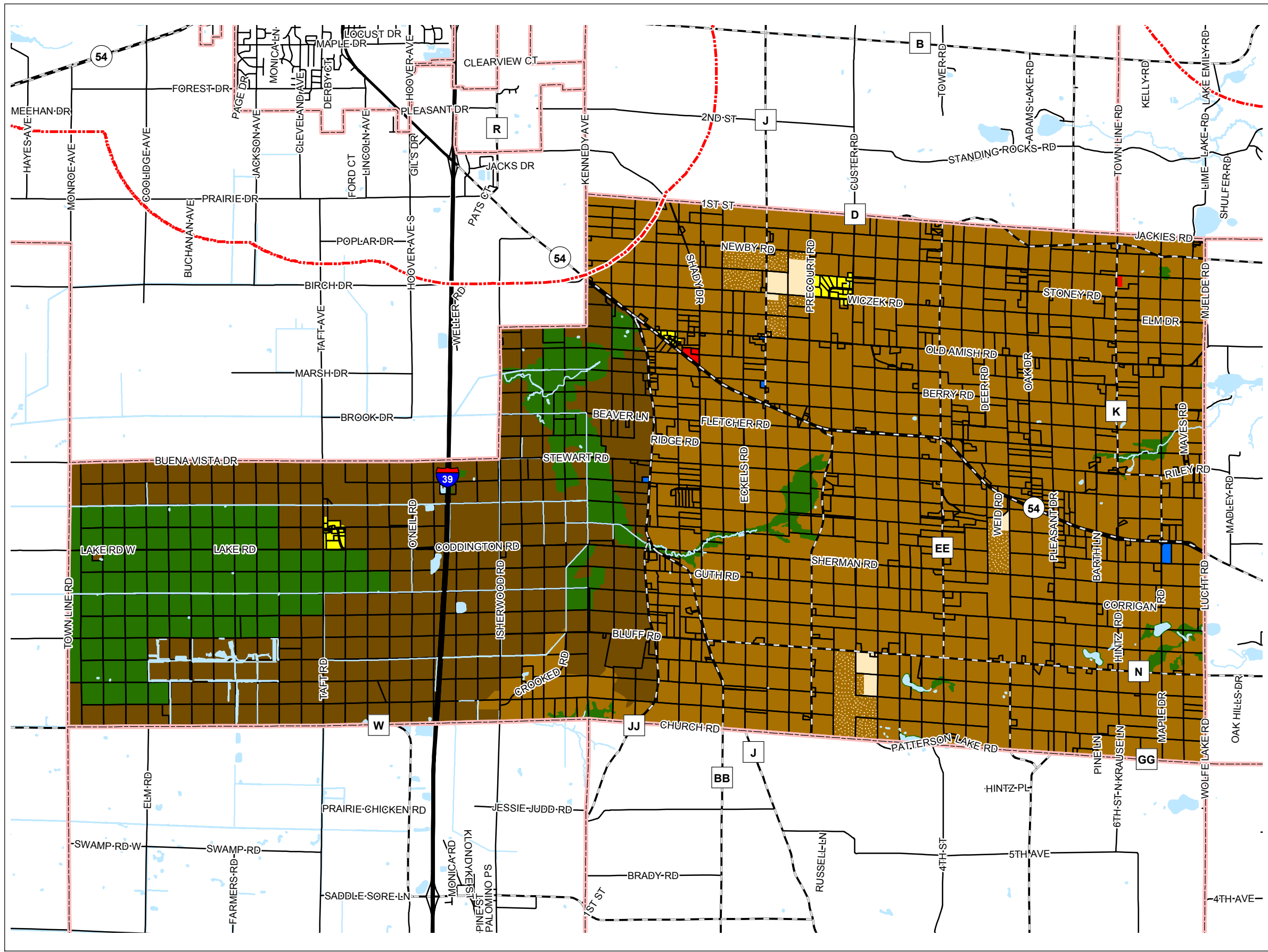
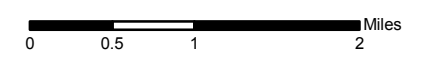


Map 8.2 Future Land Use



- BuenaVista_NonMetallicMineral
- Residential
- Commercial
- Institutional
- L-1 Enterprise Agriculture
- L-2 Intermediate Agriculture
- L-3 Limited Agriculture/Mixed Use
- Natural Areas - Protected
- Rural Areas - Limited Development
- Road Right-of-Way
- Non-Metallic Mineral Extraction
- Possible Future Gravel Pit (Currently owned or leased by non-metallic mining operators)

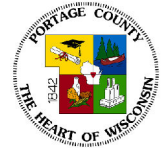
Village of Plover Extraterritorial Boundary



Source: Portage County Planning & Zoning (2015)

Adopted: February 9, 2015

Town of Buena Vista Comprehensive Plan



Portage County
Planning & Zoning
1462 Strongs Ave.
Stevens Point, WI 54481

Date: 1/12/2017